

DODGE COUNTY UTILITY INSTALLATION AGREEMENT
Public Utilities

WITNESS, that this shall be an agreement between Dodge County, hereafter referred to as the County and OMAHA PUBLIC POWER DISTRICT, hereafter referred to as the Applicant. Whereas, the County and Applicant do hereby agree,

- THAT, the Applicant shall be permitted to install a overhead and underground under, through, or aerial, the Public Right-of-Way of Dodge County.
- THAT, the County and Townships are the owners and responsible for the Public Right-of-Way in the County and Applicant desires to install a Utility on Public Right-of Way.
- THAT, In consideration of this agreement, the County does hereby permit Applicant to lay, install and construct said Utility in the Public Right-of-Way between HWY 275 & CO RD 20 TO STATE ST & DONALD K. SCHWAB MEMORIAL HWY (Description of Property or Sections) in SEC 21 TWN 19 RNG 19 TO SEC 9 TWN 19 RNG 8E Township, Dodge County, Nebraska.
- THAT, the permit on the part of Dodge County is revocable at the will of the County, and Applicant agrees that upon written notice from the County Board of Supervisors, he will immediately and forthwith remove said Utility and any and all pipes or other material contained or used in connection with said Utility and return the roadway occupied by said Utility to substantially it's original condition as before installation of said Utility.
- THAT, the Applicant shall notify the Highway Superintendent and local Township for the purpose of removing the gravel windrow to the opposite side of road so as not to lose any gravel in the open trench.
- THAT, all backfill in the Public Right-of-Way proper shall be made with material excavated from the crossing or with material equivalent thereto in texture. Material shall be placed in six inch lifts for the full depth of the trench and compacted by tamping to the original cross section. All utilities placed in areas susceptible to erosion shall place adequate protection against erosion. This protection may include bale checks, silt fence and erosion blankets. All vegetation destroyed shall be replaced. Disturbed areas will be reseeded with native grasses and a starter fertilizer. The minimum depth of earth cover over the utility line shall be 3 feet. Installation of underground utility lines under the traveled portion of an existing county road way must be encased in a plastic or steel conduit. The casing shall be bored from the toe of the shoulder slope to the toe of the opposite shoulder slope. The utility shall be placed at a minimum depth of 3 feet below the bottom elevation of the parallel road ditch. Applicant and his contractor or subcontractors are responsible for temporary traffic control on Dodge County Right-of-Way based on the standards and guidelines found in Part 6 of the 2009 Edition of the Manual on Uniform Traffic Control Devices (MUTCD) to insure a safe work zone for the workers and the public. Applicant will provide all necessary signs, barricades, cones, flaggers and message boards.
- THAT, the Applicant shall obtain approval of all County road restoration from the County Highway Superintendent or Township Official prior to leaving the site(s).
- THAT, all backfilled area(s) disturbed by excavation and backfill operations shall be graded, hand dressed as required to restore the terrain to its original shape, grade, and cross section, and regraded or roocked at a rate of 150 tons per mile as directed by the County Highway Superintendent or Township Official.
- THAT, the Applicant shall as directed by the County Highway Superintendent or Township Official remove at the Applicant's expense from the Public Right-of-Way all temporary structures, and waste materials resulting from their operations.
- THAT, the Applicant shall file a scaled set of plans, showing the Utility route, depth, and distance from the section line with the Dodge County Highway Superintendent.
- THAT, the Applicant shall when installing an aerial Utility, shall install such Utility one foot inside the Public Right-of-Way and at a minimum height of 18 feet above the traveled way.
- THAT, the future maintenance of said Utility and reinstallation or reconstruction of same for any purpose whatsoever shall be borne by Applicant.
- THAT, Applicant does hereby agree to hold the County or any of its Officers, Agents, or Employees forever harmless of all liabilities due to improper installation, construction, and maintenance of said Utility.
- ~~THAT, the Applicant shall submit an Insurance Certificate verifying General Liability of \$1,000,000.00; Personal Injury of \$500,000.00; Product & Completed Operations Aggregate of \$1,000,000.00; Medical Expense (Any One Person) of \$5,000.00; Each Occurrence of \$500,000.00. Certificate to be filed with this application.~~
- THAT, this permit is valid for 6 months from the date of issuance or reapplication is required to renew.

IN WITNESS WHEREOF, the parties aforesaid have hereto set their hand this 7 day of September, 2022

DocuSigned by:
Sharyl L McGinn
Signature of Applicant

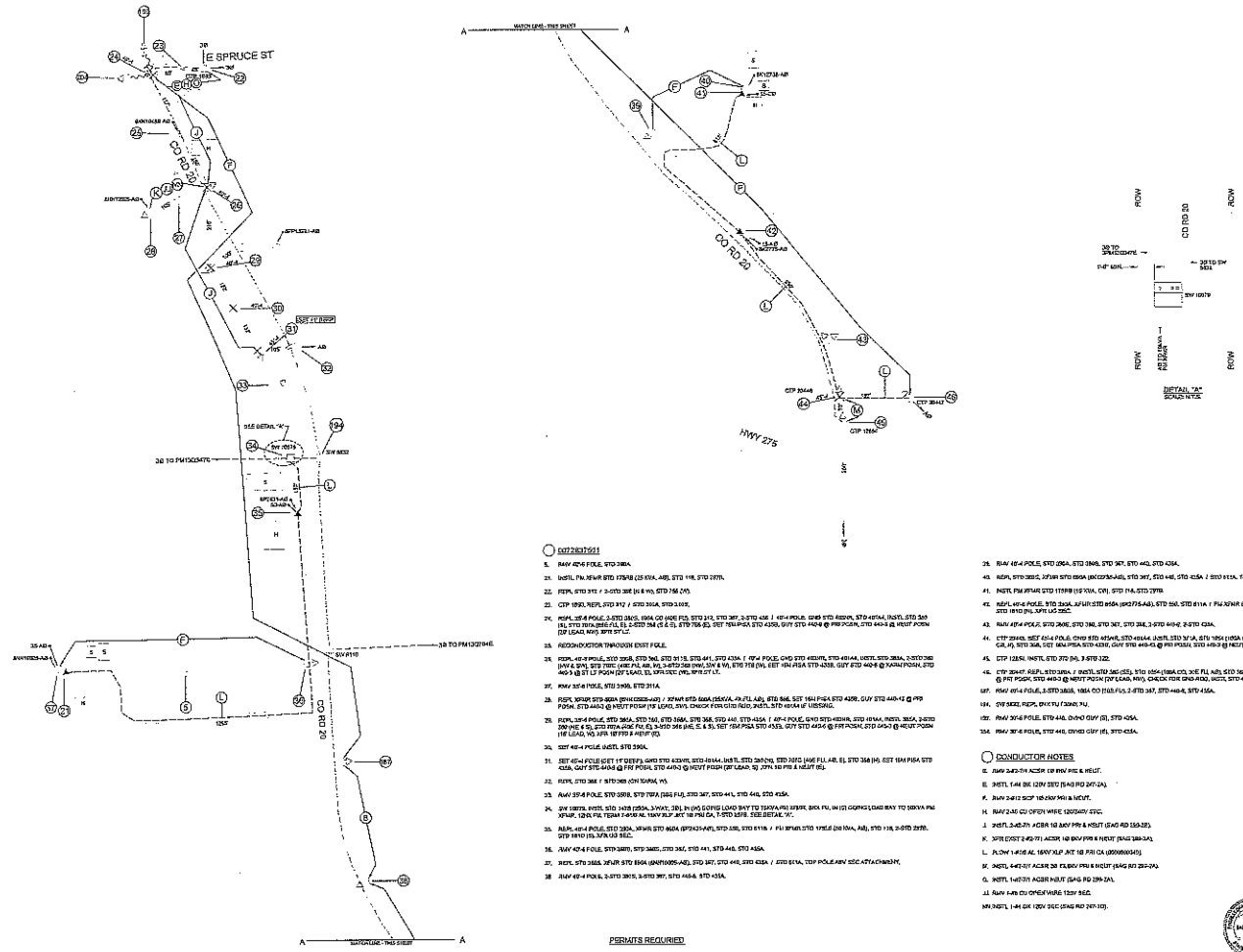
[Signature]
Dodge County Highway Superintendent

OMAHA PUBLIC POWER DISTRICT
ATTN: KITTY DIERKS, 6E/EP3
444 S 16TH ST MALL
OMAHA, NE 68102-2247
Address of Applicant

Sept. 21, 2022
Date Filed with Dodge County Board of Supervisors

COPY

2022 SEP 15 AM 7:16
Dodge County



002263761

1. RAW 42" POLE, STD 300A.
2. UNCL. PA. 36" R/S STD 370A (25' DIA. AB), STD 118, STD 207A.
3. C/P 18" R/S STD 370 / 2-200 36" (4" W) STD 161 (24").
4. C/P 18" R/S STD 370 / 2-200 36" (4" W) STD 161 (24").
5. UNCL. PA. 36" R/S STD 370A (25' DIA. AB), STD 118, STD 207A.
6. UNCL. PA. 36" R/S STD 370A (25' DIA. AB), STD 118, STD 207A.
7. UNCL. PA. 36" R/S STD 370A (25' DIA. AB), STD 118, STD 207A.
8. UNCL. PA. 36" R/S STD 370A (25' DIA. AB), STD 118, STD 207A.
9. UNCL. PA. 36" R/S STD 370A (25' DIA. AB), STD 118, STD 207A.
10. UNCL. PA. 36" R/S STD 370A (25' DIA. AB), STD 118, STD 207A.
11. UNCL. PA. 36" R/S STD 370A (25' DIA. AB), STD 118, STD 207A.
12. UNCL. PA. 36" R/S STD 370A (25' DIA. AB), STD 118, STD 207A.
13. UNCL. PA. 36" R/S STD 370A (25' DIA. AB), STD 118, STD 207A.
14. UNCL. PA. 36" R/S STD 370A (25' DIA. AB), STD 118, STD 207A.
15. UNCL. PA. 36" R/S STD 370A (25' DIA. AB), STD 118, STD 207A.
16. UNCL. PA. 36" R/S STD 370A (25' DIA. AB), STD 118, STD 207A.
17. UNCL. PA. 36" R/S STD 370A (25' DIA. AB), STD 118, STD 207A.
18. UNCL. PA. 36" R/S STD 370A (25' DIA. AB), STD 118, STD 207A.
19. UNCL. PA. 36" R/S STD 370A (25' DIA. AB), STD 118, STD 207A.
20. UNCL. PA. 36" R/S STD 370A (25' DIA. AB), STD 118, STD 207A.
21. UNCL. PA. 36" R/S STD 370A (25' DIA. AB), STD 118, STD 207A.
22. UNCL. PA. 36" R/S STD 370A (25' DIA. AB), STD 118, STD 207A.
23. UNCL. PA. 36" R/S STD 370A (25' DIA. AB), STD 118, STD 207A.
24. UNCL. PA. 36" R/S STD 370A (25' DIA. AB), STD 118, STD 207A.
25. UNCL. PA. 36" R/S STD 370A (25' DIA. AB), STD 118, STD 207A.
26. UNCL. PA. 36" R/S STD 370A (25' DIA. AB), STD 118, STD 207A.
27. UNCL. PA. 36" R/S STD 370A (25' DIA. AB), STD 118, STD 207A.
28. UNCL. PA. 36" R/S STD 370A (25' DIA. AB), STD 118, STD 207A.
29. UNCL. PA. 36" R/S STD 370A (25' DIA. AB), STD 118, STD 207A.
30. UNCL. PA. 36" R/S STD 370A (25' DIA. AB), STD 118, STD 207A.
31. UNCL. PA. 36" R/S STD 370A (25' DIA. AB), STD 118, STD 207A.
32. UNCL. PA. 36" R/S STD 370A (25' DIA. AB), STD 118, STD 207A.
33. UNCL. PA. 36" R/S STD 370A (25' DIA. AB), STD 118, STD 207A.
34. UNCL. PA. 36" R/S STD 370A (25' DIA. AB), STD 118, STD 207A.

PERMITS REQUIRED

- A. SDCR STD 184E
- B. HOOT 287

GENERAL NOTES

NOTE: SEE ALL NOTES ON ALL SHEETS.

NOTE: SEE ALL NOTES ON ALL SHEETS.

NOTE: SEE ALL NOTES ON ALL SHEETS.

NOTE: SEE ALL NOTES ON ALL SHEETS.

NOTE: SEE ALL NOTES ON ALL SHEETS.

NOTE: SEE ALL NOTES ON ALL SHEETS.

NOTE: SEE ALL NOTES ON ALL SHEETS.

NOTE: SEE ALL NOTES ON ALL SHEETS.

NOTE: SEE ALL NOTES ON ALL SHEETS.

NOTE: SEE ALL NOTES ON ALL SHEETS.

NOTE: SEE ALL NOTES ON ALL SHEETS.

NOTE: SEE ALL NOTES ON ALL SHEETS.

NOTE: SEE ALL NOTES ON ALL SHEETS.

NOTE: SEE ALL NOTES ON ALL SHEETS.

NOTE: SEE ALL NOTES ON ALL SHEETS.

NOTE: SEE ALL NOTES ON ALL SHEETS.

NOTE: SEE ALL NOTES ON ALL SHEETS.

NOTE: SEE ALL NOTES ON ALL SHEETS.

NOTE: SEE ALL NOTES ON ALL SHEETS.

NOTE: SEE ALL NOTES ON ALL SHEETS.

NOTE: SEE ALL NOTES ON ALL SHEETS.

NOTE: SEE ALL NOTES ON ALL SHEETS.

NOTE: SEE ALL NOTES ON ALL SHEETS.

NOTE: SEE ALL NOTES ON ALL SHEETS.

NOTE: SEE ALL NOTES ON ALL SHEETS.

NOTE: SEE ALL NOTES ON ALL SHEETS.

NOTE: SEE ALL NOTES ON ALL SHEETS.

NOTE: SEE ALL NOTES ON ALL SHEETS.

NOTE: SEE ALL NOTES ON ALL SHEETS.

NOTE: SEE ALL NOTES ON ALL SHEETS.

NOTE: SEE ALL NOTES ON ALL SHEETS.

NOTE: SEE ALL NOTES ON ALL SHEETS.

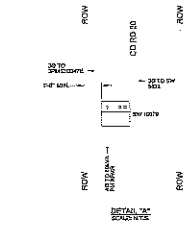
NOTE: SEE ALL NOTES ON ALL SHEETS.

NOTE: SEE ALL NOTES ON ALL SHEETS.

NOTE: SEE ALL NOTES ON ALL SHEETS.

NOTE: SEE ALL NOTES ON ALL SHEETS.

NOTE: SEE ALL NOTES ON ALL SHEETS.



PERMITS REQUIRED

- A. SDCR STD 184E
- B. HOOT 287

GENERAL NOTES

NOTE: SEE ALL NOTES ON ALL SHEETS.

NOTE: SEE ALL NOTES ON ALL SHEETS.

NOTE: SEE ALL NOTES ON ALL SHEETS.

NOTE: SEE ALL NOTES ON ALL SHEETS.

NOTE: SEE ALL NOTES ON ALL SHEETS.

NOTE: SEE ALL NOTES ON ALL SHEETS.

NOTE: SEE ALL NOTES ON ALL SHEETS.

NOTE: SEE ALL NOTES ON ALL SHEETS.

NOTE: SEE ALL NOTES ON ALL SHEETS.

NOTE: SEE ALL NOTES ON ALL SHEETS.

NOTE: SEE ALL NOTES ON ALL SHEETS.

NOTE: SEE ALL NOTES ON ALL SHEETS.

NOTE: SEE ALL NOTES ON ALL SHEETS.

NOTE: SEE ALL NOTES ON ALL SHEETS.

NOTE: SEE ALL NOTES ON ALL SHEETS.

NOTE: SEE ALL NOTES ON ALL SHEETS.

NOTE: SEE ALL NOTES ON ALL SHEETS.

NOTE: SEE ALL NOTES ON ALL SHEETS.

NOTE: SEE ALL NOTES ON ALL SHEETS.

NOTE: SEE ALL NOTES ON ALL SHEETS.

NOTE: SEE ALL NOTES ON ALL SHEETS.

NOTE: SEE ALL NOTES ON ALL SHEETS.

NOTE: SEE ALL NOTES ON ALL SHEETS.

NOTE: SEE ALL NOTES ON ALL SHEETS.

NOTE: SEE ALL NOTES ON ALL SHEETS.

NOTE: SEE ALL NOTES ON ALL SHEETS.

NOTE: SEE ALL NOTES ON ALL SHEETS.

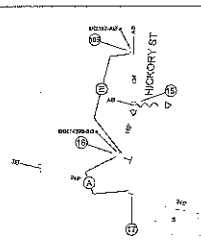
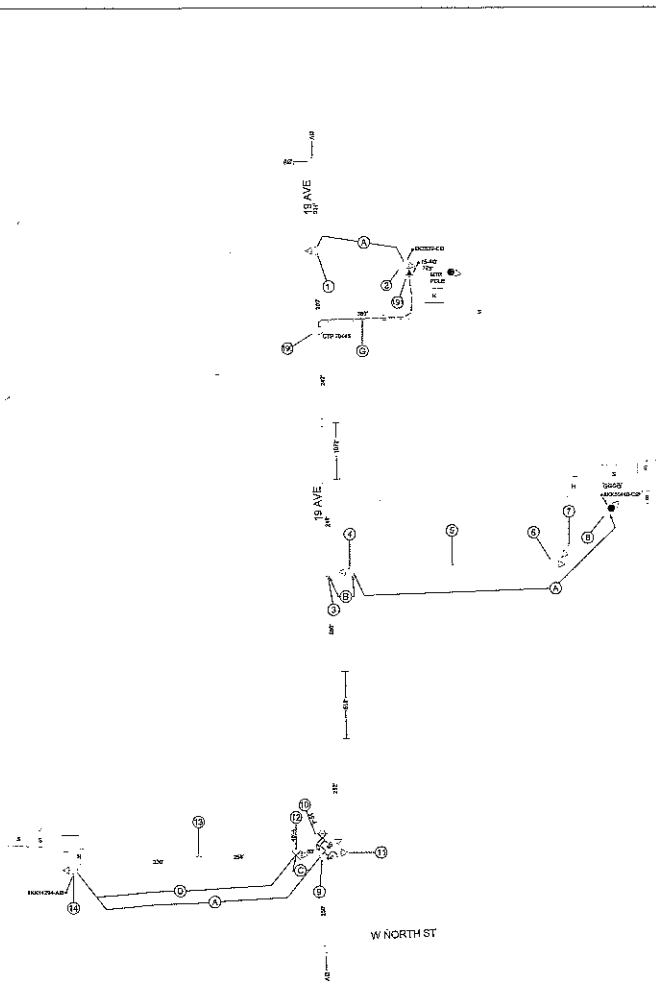
NOTE: SEE ALL NOTES ON ALL SHEETS.

NOTE: SEE ALL NOTES ON ALL SHEETS.

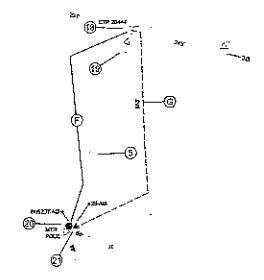


		REBUILD 10 & 307 W.D. 00226376-01	
VIC OF HOOPER CNT 024			
PROJECT NO. SHEET NO. DATE	HOOPER, NEBRASKA SHE-22-034 2022	871 P Street, Suite 300 P.O. Box 24282 Lincoln, NE 68524 TEL: 402-474-6111 FAX: 402-474-6190 www.olsson.com	SHEET 2 OF 8

PROJECT: HOOPER, NEBRASKA, 1500 S. HOOPER STREET, HOOPER, NEBRASKA, 68801
 DRAWING NO.: 2022-0204
 SHEET NO.: 1 OF 8



DONALD K. SCHWAB MEMORIAL HWY



- CONDUCTOR NOTES**
1. RUN STD WTR L&SS CD & FL, STD 44, STD 82A.
 2. ASP, STD 308, 3" WTR 1" DIA UNDR-CDL, STD 207, STD 445, STD 455A, STD 81A, TOP POLE, ANY SEC ATTACHMENT.
 3. RUN STD WTR 2" DIA FL, STD 307.
 4. RUN STD WTR 2" DIA FL, STD 307, STD 441, STD 455A.
 5. RUN STD WTR 2" DIA FL, STD 307, STD 441, STD 455A.
 6. RUN STD WTR 2" DIA FL, STD 307, STD 441, STD 455A.
 7. RUN STD WTR 2" DIA FL, STD 307, STD 441, STD 455A.
 8. RUN STD WTR 2" DIA FL, STD 307, STD 441, STD 455A.
 9. RUN STD WTR 2" DIA FL, STD 307, STD 441, STD 455A.
 10. RUN STD WTR 2" DIA FL, STD 307, STD 441, STD 455A.
 11. RUN STD WTR 2" DIA FL, STD 307, STD 441, STD 455A.
 12. RUN STD WTR 2" DIA FL, STD 307, STD 441, STD 455A.
 13. RUN STD WTR 2" DIA FL, STD 307, STD 441, STD 455A.
 14. RUN STD WTR 2" DIA FL, STD 307, STD 441, STD 455A.
 15. RUN STD WTR 2" DIA FL, STD 307, STD 441, STD 455A.

- PERMITS REQUIRED**
- A. DODGE 20245
 - B. NEBR 2027

GENERAL NOTE: INSTL STD 10 AT ALL TRIP/20 LOCATIONS.

- CONDUCTOR NOTES**
- A. RUN STD WTR 2" DIA FL, STD 307.
 - B. RUN STD WTR 2" DIA FL, STD 307.
 - C. INSTL 2" DIA FL, STD 307.
 - D. INSTL 2" DIA FL, STD 307.
 - E. INSTL 2" DIA FL, STD 307.
 - F. INSTL 2" DIA FL, STD 307.
 - G. INSTL 2" DIA FL, STD 307.



	DATE	REVISION/DESCRIPTION	REBUILD 10 & 30 PPI W.D. 0072675-01 VIC OF HOOPER CRT 224		SHEET 1 OF 8
	PREPARED BY CHECKED BY DESIGNED BY DRAWN BY	PROJECT NO. DATE			
REVISIONS			HOOPER, NEBRASKA	2022	SHEET 1 OF 8