

NOTES

1. REPAIR AND REPAIR / CONDUIT ON (1) (2) TOP OF POLE
2. REPAIR AND REPAIR / CONDUIT ON (1) (2) TOP OF POLE
3. REPAIR AND REPAIR / CONDUIT ON (1) (2) TOP OF POLE
4. REPAIR AND REPAIR / CONDUIT ON (1) (2) TOP OF POLE
5. REPAIR AND REPAIR / CONDUIT ON (1) (2) TOP OF POLE
6. REPAIR AND REPAIR / CONDUIT ON (1) (2) TOP OF POLE
7. REPAIR AND REPAIR / CONDUIT ON (1) (2) TOP OF POLE
8. REPAIR AND REPAIR / CONDUIT ON (1) (2) TOP OF POLE
9. REPAIR AND REPAIR / CONDUIT ON (1) (2) TOP OF POLE
10. REPAIR AND REPAIR / CONDUIT ON (1) (2) TOP OF POLE
11. REPAIR AND REPAIR / CONDUIT ON (1) (2) TOP OF POLE
12. REPAIR AND REPAIR / CONDUIT ON (1) (2) TOP OF POLE
13. REPAIR AND REPAIR / CONDUIT ON (1) (2) TOP OF POLE
14. REPAIR AND REPAIR / CONDUIT ON (1) (2) TOP OF POLE
15. REPAIR AND REPAIR / CONDUIT ON (1) (2) TOP OF POLE
16. REPAIR AND REPAIR / CONDUIT ON (1) (2) TOP OF POLE
17. REPAIR AND REPAIR / CONDUIT ON (1) (2) TOP OF POLE
18. REPAIR AND REPAIR / CONDUIT ON (1) (2) TOP OF POLE
19. REPAIR AND REPAIR / CONDUIT ON (1) (2) TOP OF POLE
20. REPAIR AND REPAIR / CONDUIT ON (1) (2) TOP OF POLE
21. REPAIR AND REPAIR / CONDUIT ON (1) (2) TOP OF POLE



CONSTRUCTION NOTES

- F. REPAIR AND REPAIR / CONDUIT ON (1) (2) TOP OF POLE
- G. REPAIR AND REPAIR / CONDUIT ON (1) (2) TOP OF POLE
- H. REPAIR AND REPAIR / CONDUIT ON (1) (2) TOP OF POLE
- I. REPAIR AND REPAIR / CONDUIT ON (1) (2) TOP OF POLE
- J. REPAIR AND REPAIR / CONDUIT ON (1) (2) TOP OF POLE
- K. REPAIR AND REPAIR / CONDUIT ON (1) (2) TOP OF POLE
- L. REPAIR AND REPAIR / CONDUIT ON (1) (2) TOP OF POLE

PERMITS REQUIRED:
 A. CONDUIT POLE
 B. REPAIR AND REPAIR / CONDUIT ON (1) (2) TOP OF POLE

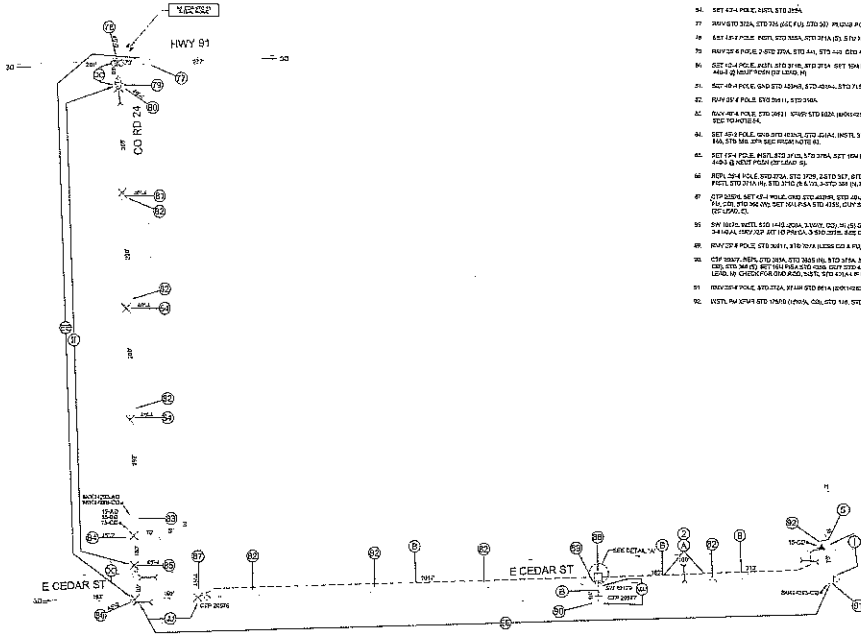
GENERAL NOTE: ACTS TO BE AT ALL POLE LOCATIONS.



| | | | | | |
|---------------------------------------------------------------------------------------|-----|----------|------------------------|-------------------------------------------------------------------|---------------------------------------------------------------------------------------|
|  | REV | DATE | REVISION DESCRIPTION | REBUILD 10' PRI W.O. 0072879-01 VIG OF NICKERSON OKT 224 |  |
| | 1 | 10/20/23 | ISSUE FOR CONSTRUCTION | | |
| REVISIONS | | | NICKERSON, NEBRASKA | SHE-23-1331 | 2023 |

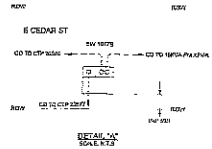
1. ALL DIMENSIONS ARE UNLESS OTHERWISE SPECIFIED.
 2. ALL DIMENSIONS ARE UNLESS OTHERWISE SPECIFIED.
 3. ALL DIMENSIONS ARE UNLESS OTHERWISE SPECIFIED.
 4. ALL DIMENSIONS ARE UNLESS OTHERWISE SPECIFIED.
 5. ALL DIMENSIONS ARE UNLESS OTHERWISE SPECIFIED.
 6. ALL DIMENSIONS ARE UNLESS OTHERWISE SPECIFIED.
 7. ALL DIMENSIONS ARE UNLESS OTHERWISE SPECIFIED.
 8. ALL DIMENSIONS ARE UNLESS OTHERWISE SPECIFIED.
 9. ALL DIMENSIONS ARE UNLESS OTHERWISE SPECIFIED.
 10. ALL DIMENSIONS ARE UNLESS OTHERWISE SPECIFIED.
 11. ALL DIMENSIONS ARE UNLESS OTHERWISE SPECIFIED.
 12. ALL DIMENSIONS ARE UNLESS OTHERWISE SPECIFIED.
 13. ALL DIMENSIONS ARE UNLESS OTHERWISE SPECIFIED.
 14. ALL DIMENSIONS ARE UNLESS OTHERWISE SPECIFIED.
 15. ALL DIMENSIONS ARE UNLESS OTHERWISE SPECIFIED.
 16. ALL DIMENSIONS ARE UNLESS OTHERWISE SPECIFIED.
 17. ALL DIMENSIONS ARE UNLESS OTHERWISE SPECIFIED.
 18. ALL DIMENSIONS ARE UNLESS OTHERWISE SPECIFIED.
 19. ALL DIMENSIONS ARE UNLESS OTHERWISE SPECIFIED.
 20. ALL DIMENSIONS ARE UNLESS OTHERWISE SPECIFIED.
 21. ALL DIMENSIONS ARE UNLESS OTHERWISE SPECIFIED.

PROJECT NO. 0072878-01
 DATE: 08/20/2023
 DRAWN BY: J. H. HARRIS
 CHECKED BY: J. H. HARRIS
 APPROVED BY: J. H. HARRIS
 PROJECT LOCATION: NICKERSON, NEBRASKA





- 0072878-01**
1. REAR 12" VOLT 50000-40 C/P (ACROSS 114)
 2. 12" VOLT 50000-40
 3. SET 12" POLE, 24" SET, STD 204
 4. 24" VOLT 50000-40, STD 204 (1/2) STD 300, 1" C/P, 1" P/C
 5. SET 12" POLE, 24" SET, STD 204 (1/2) STD 300, 1" C/P, 1" P/C
 6. SET 12" POLE, 24" SET, STD 204 (1/2) STD 300, 1" C/P, 1" P/C
 7. SET 12" POLE, 24" SET, STD 204 (1/2) STD 300, 1" C/P, 1" P/C
 8. SET 12" POLE, 24" SET, STD 204 (1/2) STD 300, 1" C/P, 1" P/C
 9. SET 12" POLE, 24" SET, STD 204 (1/2) STD 300, 1" C/P, 1" P/C
 10. SET 12" POLE, 24" SET, STD 204 (1/2) STD 300, 1" C/P, 1" P/C
 11. SET 12" POLE, 24" SET, STD 204 (1/2) STD 300, 1" C/P, 1" P/C
 12. SET 12" POLE, 24" SET, STD 204 (1/2) STD 300, 1" C/P, 1" P/C
 13. SET 12" POLE, 24" SET, STD 204 (1/2) STD 300, 1" C/P, 1" P/C
 14. SET 12" POLE, 24" SET, STD 204 (1/2) STD 300, 1" C/P, 1" P/C
 15. SET 12" POLE, 24" SET, STD 204 (1/2) STD 300, 1" C/P, 1" P/C
 16. SET 12" POLE, 24" SET, STD 204 (1/2) STD 300, 1" C/P, 1" P/C
 17. SET 12" POLE, 24" SET, STD 204 (1/2) STD 300, 1" C/P, 1" P/C
 18. SET 12" POLE, 24" SET, STD 204 (1/2) STD 300, 1" C/P, 1" P/C
 19. SET 12" POLE, 24" SET, STD 204 (1/2) STD 300, 1" C/P, 1" P/C
 20. SET 12" POLE, 24" SET, STD 204 (1/2) STD 300, 1" C/P, 1" P/C
 21. SET 12" POLE, 24" SET, STD 204 (1/2) STD 300, 1" C/P, 1" P/C
 22. SET 12" POLE, 24" SET, STD 204 (1/2) STD 300, 1" C/P, 1" P/C
 23. SET 12" POLE, 24" SET, STD 204 (1/2) STD 300, 1" C/P, 1" P/C
 24. SET 12" POLE, 24" SET, STD 204 (1/2) STD 300, 1" C/P, 1" P/C
 25. SET 12" POLE, 24" SET, STD 204 (1/2) STD 300, 1" C/P, 1" P/C
 26. SET 12" POLE, 24" SET, STD 204 (1/2) STD 300, 1" C/P, 1" P/C
 27. SET 12" POLE, 24" SET, STD 204 (1/2) STD 300, 1" C/P, 1" P/C
 28. SET 12" POLE, 24" SET, STD 204 (1/2) STD 300, 1" C/P, 1" P/C
 29. SET 12" POLE, 24" SET, STD 204 (1/2) STD 300, 1" C/P, 1" P/C
 30. SET 12" POLE, 24" SET, STD 204 (1/2) STD 300, 1" C/P, 1" P/C
 31. SET 12" POLE, 24" SET, STD 204 (1/2) STD 300, 1" C/P, 1" P/C
 32. SET 12" POLE, 24" SET, STD 204 (1/2) STD 300, 1" C/P, 1" P/C
 33. SET 12" POLE, 24" SET, STD 204 (1/2) STD 300, 1" C/P, 1" P/C
 34. SET 12" POLE, 24" SET, STD 204 (1/2) STD 300, 1" C/P, 1" P/C
 35. SET 12" POLE, 24" SET, STD 204 (1/2) STD 300, 1" C/P, 1" P/C
 36. SET 12" POLE, 24" SET, STD 204 (1/2) STD 300, 1" C/P, 1" P/C
 37. SET 12" POLE, 24" SET, STD 204 (1/2) STD 300, 1" C/P, 1" P/C
 38. SET 12" POLE, 24" SET, STD 204 (1/2) STD 300, 1" C/P, 1" P/C
 39. SET 12" POLE, 24" SET, STD 204 (1/2) STD 300, 1" C/P, 1" P/C
 40. SET 12" POLE, 24" SET, STD 204 (1/2) STD 300, 1" C/P, 1" P/C
 41. SET 12" POLE, 24" SET, STD 204 (1/2) STD 300, 1" C/P, 1" P/C
 42. SET 12" POLE, 24" SET, STD 204 (1/2) STD 300, 1" C/P, 1" P/C
 43. SET 12" POLE, 24" SET, STD 204 (1/2) STD 300, 1" C/P, 1" P/C
 44. SET 12" POLE, 24" SET, STD 204 (1/2) STD 300, 1" C/P, 1" P/C
 45. SET 12" POLE, 24" SET, STD 204 (1/2) STD 300, 1" C/P, 1" P/C
 46. SET 12" POLE, 24" SET, STD 204 (1/2) STD 300, 1" C/P, 1" P/C
 47. SET 12" POLE, 24" SET, STD 204 (1/2) STD 300, 1" C/P, 1" P/C
 48. SET 12" POLE, 24" SET, STD 204 (1/2) STD 300, 1" C/P, 1" P/C
 49. SET 12" POLE, 24" SET, STD 204 (1/2) STD 300, 1" C/P, 1" P/C
 50. SET 12" POLE, 24" SET, STD 204 (1/2) STD 300, 1" C/P, 1" P/C
 51. SET 12" POLE, 24" SET, STD 204 (1/2) STD 300, 1" C/P, 1" P/C

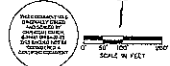
- CONTRACTOR NOTES**
- A. PLACE ALL UTILITIES IN 12" DIA. CONCRETE PIPE.
 - B. PLACE ALL UTILITIES IN 12" DIA. CONCRETE PIPE.
 - C. PLACE ALL UTILITIES IN 12" DIA. CONCRETE PIPE.
 - D. PLACE ALL UTILITIES IN 12" DIA. CONCRETE PIPE.
 - E. PLACE ALL UTILITIES IN 12" DIA. CONCRETE PIPE.
 - F. PLACE ALL UTILITIES IN 12" DIA. CONCRETE PIPE.
 - G. PLACE ALL UTILITIES IN 12" DIA. CONCRETE PIPE.
 - H. PLACE ALL UTILITIES IN 12" DIA. CONCRETE PIPE.
 - I. PLACE ALL UTILITIES IN 12" DIA. CONCRETE PIPE.
 - J. PLACE ALL UTILITIES IN 12" DIA. CONCRETE PIPE.
 - K. PLACE ALL UTILITIES IN 12" DIA. CONCRETE PIPE.
 - L. PLACE ALL UTILITIES IN 12" DIA. CONCRETE PIPE.
 - M. PLACE ALL UTILITIES IN 12" DIA. CONCRETE PIPE.
 - N. PLACE ALL UTILITIES IN 12" DIA. CONCRETE PIPE.
 - O. PLACE ALL UTILITIES IN 12" DIA. CONCRETE PIPE.
 - P. PLACE ALL UTILITIES IN 12" DIA. CONCRETE PIPE.
 - Q. PLACE ALL UTILITIES IN 12" DIA. CONCRETE PIPE.
 - R. PLACE ALL UTILITIES IN 12" DIA. CONCRETE PIPE.
 - S. PLACE ALL UTILITIES IN 12" DIA. CONCRETE PIPE.
 - T. PLACE ALL UTILITIES IN 12" DIA. CONCRETE PIPE.
 - U. PLACE ALL UTILITIES IN 12" DIA. CONCRETE PIPE.
 - V. PLACE ALL UTILITIES IN 12" DIA. CONCRETE PIPE.
 - W. PLACE ALL UTILITIES IN 12" DIA. CONCRETE PIPE.
 - X. PLACE ALL UTILITIES IN 12" DIA. CONCRETE PIPE.
 - Y. PLACE ALL UTILITIES IN 12" DIA. CONCRETE PIPE.
 - Z. PLACE ALL UTILITIES IN 12" DIA. CONCRETE PIPE.

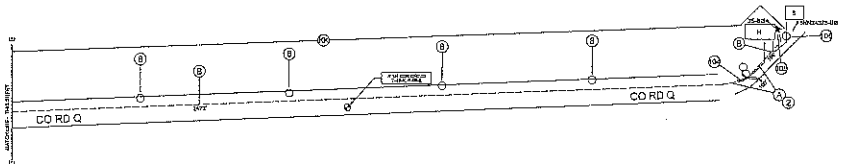
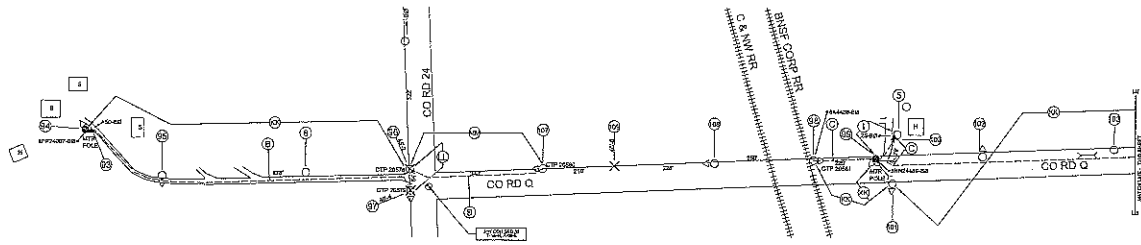


- PERMITS REQUIRED**
1. 80001-00104
 2. 80011-001, 001, 002

GENERAL NOTE: INSTALL HERE AT ALL SPICE LOCATIONS.

| | | | | |
|-----------------------------------------------------------------------------------------------------------------------------------|-----|------------|------------------------|---------------------------------------------------------------------------------------------------------------------------------------------------------------------------------------------------------------------------------------------------------------------------------------------------------------------------------------------|
|  <p>OPPO Omaha Public Power District</p> | REV | DATE | DESCRIPTION | REBUILD (10 PRI) W.O. 0072878-01 |
| | 1 | 08/20/2023 | ISSUE FOR CONSTRUCTION | |
| | | | | VIC OF NICKERSON EXT 224 |
| REVISIONS | | | | NICKERSON, NEBRASKA SKS-23-1331 2023 |
| | | | |  <p>olsson</p> <p>Nebraska Corporation of Authority SCA0528 1501 P Street, Suite 200 PO Box 80220 Omaha, NE 68108 TEL: 402.474.6211 FAX: 402.474.6190 www.olsson.com</p> |





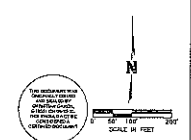
- SYMBOLS:**
1. 1/2" DEEP 12" WIDE 4" HIGH (600000103)
 2. 1/2" DEEP 12" WIDE 4" HIGH (600000103)
 3. 2" DIA. 1/2" HIGH
 4. 2" DIA. 1/2" HIGH
 5. 2" DIA. 1/2" HIGH
 6. 2" DIA. 1/2" HIGH
 7. 2" DIA. 1/2" HIGH
 8. 2" DIA. 1/2" HIGH
 9. 2" DIA. 1/2" HIGH
 10. 2" DIA. 1/2" HIGH
 11. 2" DIA. 1/2" HIGH
 12. 2" DIA. 1/2" HIGH
 13. 2" DIA. 1/2" HIGH
 14. 2" DIA. 1/2" HIGH
 15. 2" DIA. 1/2" HIGH
 16. 2" DIA. 1/2" HIGH
 17. 2" DIA. 1/2" HIGH
 18. 2" DIA. 1/2" HIGH
 19. 2" DIA. 1/2" HIGH
 20. 2" DIA. 1/2" HIGH
 21. 2" DIA. 1/2" HIGH
 22. 2" DIA. 1/2" HIGH
 23. 2" DIA. 1/2" HIGH
 24. 2" DIA. 1/2" HIGH
 25. 2" DIA. 1/2" HIGH
 26. 2" DIA. 1/2" HIGH
 27. 2" DIA. 1/2" HIGH
 28. 2" DIA. 1/2" HIGH
 29. 2" DIA. 1/2" HIGH
 30. 2" DIA. 1/2" HIGH
 31. 2" DIA. 1/2" HIGH
 32. 2" DIA. 1/2" HIGH
 33. 2" DIA. 1/2" HIGH
 34. 2" DIA. 1/2" HIGH
 35. 2" DIA. 1/2" HIGH
 36. 2" DIA. 1/2" HIGH
 37. 2" DIA. 1/2" HIGH
 38. 2" DIA. 1/2" HIGH
 39. 2" DIA. 1/2" HIGH
 40. 2" DIA. 1/2" HIGH
 41. 2" DIA. 1/2" HIGH
 42. 2" DIA. 1/2" HIGH
 43. 2" DIA. 1/2" HIGH
 44. 2" DIA. 1/2" HIGH
 45. 2" DIA. 1/2" HIGH
 46. 2" DIA. 1/2" HIGH
 47. 2" DIA. 1/2" HIGH
 48. 2" DIA. 1/2" HIGH
 49. 2" DIA. 1/2" HIGH
 50. 2" DIA. 1/2" HIGH
 51. 2" DIA. 1/2" HIGH
 52. 2" DIA. 1/2" HIGH
 53. 2" DIA. 1/2" HIGH
 54. 2" DIA. 1/2" HIGH
 55. 2" DIA. 1/2" HIGH
 56. 2" DIA. 1/2" HIGH
 57. 2" DIA. 1/2" HIGH
 58. 2" DIA. 1/2" HIGH
 59. 2" DIA. 1/2" HIGH
 60. 2" DIA. 1/2" HIGH
 61. 2" DIA. 1/2" HIGH
 62. 2" DIA. 1/2" HIGH
 63. 2" DIA. 1/2" HIGH
 64. 2" DIA. 1/2" HIGH
 65. 2" DIA. 1/2" HIGH
 66. 2" DIA. 1/2" HIGH
 67. 2" DIA. 1/2" HIGH
 68. 2" DIA. 1/2" HIGH
 69. 2" DIA. 1/2" HIGH
 70. 2" DIA. 1/2" HIGH
 71. 2" DIA. 1/2" HIGH
 72. 2" DIA. 1/2" HIGH
 73. 2" DIA. 1/2" HIGH
 74. 2" DIA. 1/2" HIGH
 75. 2" DIA. 1/2" HIGH
 76. 2" DIA. 1/2" HIGH
 77. 2" DIA. 1/2" HIGH
 78. 2" DIA. 1/2" HIGH
 79. 2" DIA. 1/2" HIGH
 80. 2" DIA. 1/2" HIGH
 81. 2" DIA. 1/2" HIGH
 82. 2" DIA. 1/2" HIGH
 83. 2" DIA. 1/2" HIGH
 84. 2" DIA. 1/2" HIGH
 85. 2" DIA. 1/2" HIGH
 86. 2" DIA. 1/2" HIGH
 87. 2" DIA. 1/2" HIGH
 88. 2" DIA. 1/2" HIGH
 89. 2" DIA. 1/2" HIGH
 90. 2" DIA. 1/2" HIGH
 91. 2" DIA. 1/2" HIGH
 92. 2" DIA. 1/2" HIGH
 93. 2" DIA. 1/2" HIGH
 94. 2" DIA. 1/2" HIGH
 95. 2" DIA. 1/2" HIGH
 96. 2" DIA. 1/2" HIGH
 97. 2" DIA. 1/2" HIGH
 98. 2" DIA. 1/2" HIGH
 99. 2" DIA. 1/2" HIGH
 100. 2" DIA. 1/2" HIGH



- CONDUCTOR NOTES:**
- A. POLE 1-10' HGT. 1500' W.P. 2" DIA. (600000103)
 - B. POLE 1-10' HGT. 1500' W.P. 2" DIA. (600000103)
 - C. POLE 1-10' HGT. 1500' W.P. 2" DIA. (600000103)
 - D. POLE 1-10' HGT. 1500' W.P. 2" DIA. (600000103)
 - E. POLE 1-10' HGT. 1500' W.P. 2" DIA. (600000103)
 - F. POLE 1-10' HGT. 1500' W.P. 2" DIA. (600000103)
 - G. POLE 1-10' HGT. 1500' W.P. 2" DIA. (600000103)
 - H. POLE 1-10' HGT. 1500' W.P. 2" DIA. (600000103)
 - I. POLE 1-10' HGT. 1500' W.P. 2" DIA. (600000103)
 - J. POLE 1-10' HGT. 1500' W.P. 2" DIA. (600000103)
 - K. POLE 1-10' HGT. 1500' W.P. 2" DIA. (600000103)
 - L. POLE 1-10' HGT. 1500' W.P. 2" DIA. (600000103)
 - M. POLE 1-10' HGT. 1500' W.P. 2" DIA. (600000103)
 - N. POLE 1-10' HGT. 1500' W.P. 2" DIA. (600000103)
 - O. POLE 1-10' HGT. 1500' W.P. 2" DIA. (600000103)
 - P. POLE 1-10' HGT. 1500' W.P. 2" DIA. (600000103)
 - Q. POLE 1-10' HGT. 1500' W.P. 2" DIA. (600000103)
 - R. POLE 1-10' HGT. 1500' W.P. 2" DIA. (600000103)
 - S. POLE 1-10' HGT. 1500' W.P. 2" DIA. (600000103)
 - T. POLE 1-10' HGT. 1500' W.P. 2" DIA. (600000103)
 - U. POLE 1-10' HGT. 1500' W.P. 2" DIA. (600000103)
 - V. POLE 1-10' HGT. 1500' W.P. 2" DIA. (600000103)
 - W. POLE 1-10' HGT. 1500' W.P. 2" DIA. (600000103)
 - X. POLE 1-10' HGT. 1500' W.P. 2" DIA. (600000103)
 - Y. POLE 1-10' HGT. 1500' W.P. 2" DIA. (600000103)
 - Z. POLE 1-10' HGT. 1500' W.P. 2" DIA. (600000103)

PERMITS REQUIRED:

- A. 1200V COV. PER.
- B. 120V COV. PER.

GENERAL NOTE: 120V COV. PER. AT ALL SPICE LOCATIONS.



| | | | | | |
|---------------------------------------------------------------------------------------|-----|------------|-------------------------|--------------------------------------|---------------------------------------------------------------------------------------|
|  | NO. | DATE | REVISION DESCRIPTION | RESUBMIT 123 PRI W.O. 00728378-01 |  |
| | 1 | 01/01/2023 | ISSUED FOR CONSTRUCTION | | |
| REVISIONS | | | NICKERSON, NEBRASKA | SKE-23-1331 | 2023 |

SHEET
 6 OF 6