


CITY OF
FREMONT
NEBRASKA PATHFINDERS

 COPY

400 East Military Avenue, Fremont, NE 68025-5141

May 7, 2019

RE: Voluntary Annexation

APPLICANT # 256-
Date 5-22-2019

Dear Property Owner:

You are hereby advised that the City of Fremont has received the following application(s):

A request by Anew Development LLC on behalf of Brian Zubert for approval of Voluntary Annexation of Lot 2, Fountain Springs 4th Subdivision, located at the northwest corner of 29th Street and Yager, lying South of 32nd Street.

A public hearing on this application will be held before the City of Fremont Planning Commission on the 20th day of May, 2019. The public hearing is your opportunity to appear and speak on the merits of this application, if you so choose. The Planning Commission study session begins at 4:45 PM followed by the formal meeting at 5:00 PM in the Fremont City Council Chambers located on the second floor in the Fremont Municipal Building at 400 East Military Avenue, Fremont, Nebraska.

If you would like more information, you are encouraged to contact the applicant Robert Fields at 402-960-2363 or anewdevelopment@outlook.com, or the Planning Director, Jennifer Dam at 402-727-2636 or jennifer.dam@fremontne.gov.

The Planning Department staff report and recommendation will be available at the Planning Department office on Friday, May 17th after 3:00 PM. The Planning Commission Agenda and staff reports will also be available on the City's website at that time, www.fremontne.gov.

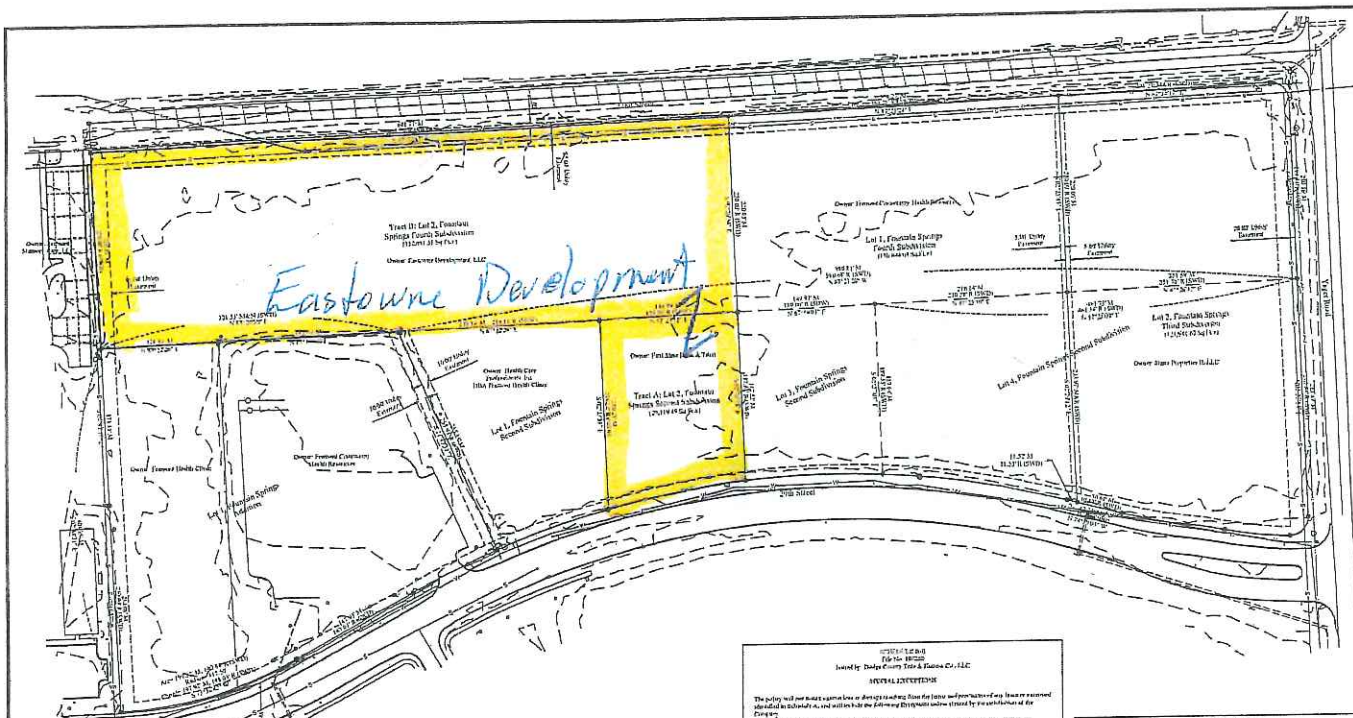
Sincerely,

Jennifer L. Dam, AICP
Planning Director

Attachment: drawings

Cc: Brian Zubert
Anew Development
Fremont School Board
County Board
Lower Platte North NRD

2019 MAY - 8 AM 10: 21
RECEIVED
Dodge Co Highway Dept



Legend

- Property Corner Found
- Property Corner Set
- M Measured Distance
- R Rounded Distance
- ★ Light Pole
- ✱ Power Pole
- Tree
- △ Fire Hydrant
- ⊕ Water Valve
- ⊖ Sign
- Sanitary Sewer
- Gas Line
- Water Line
- Telephone Line
- Underground Power Line
- Overhead Power Line
- Cleanout
- Catch Step
- ⊙ Manhole
- Flood Zone AO (Depth 2')

SECTION 16.00
 Issued by Dodge County State & Justice Co., LLC
 SPECIAL INTERESTOR

The policy will not cover a person's loss or damage resulting from the loss and non-payment of any loans or amounts advanced to a borrower by a lender or other financial institution, including but not limited to the following:

1. LOST, STOLEN, DESTROYED, OR MISAPPLIED: Funds held in a trust or other fiduciary capacity for the benefit of a beneficiary.
2. Loans and advances made or advanced in the full and complete discharge of a debt or obligation.
3. Loans and advances made or advanced in the full and complete discharge of a debt or obligation to a third party.
4. Loans and advances made or advanced in the full and complete discharge of a debt or obligation to a third party.
5. Loans and advances made or advanced in the full and complete discharge of a debt or obligation to a third party.
6. Loans and advances made or advanced in the full and complete discharge of a debt or obligation to a third party.
7. Loans and advances made or advanced in the full and complete discharge of a debt or obligation to a third party.
8. Loans and advances made or advanced in the full and complete discharge of a debt or obligation to a third party.
9. Loans and advances made or advanced in the full and complete discharge of a debt or obligation to a third party.
10. Loans and advances made or advanced in the full and complete discharge of a debt or obligation to a third party.

SECTION 16.01
 Issued by Dodge County State & Justice Co., LLC
 SPECIAL INTERESTOR

The policy will not cover a person's loss or damage resulting from the loss and non-payment of any loans or amounts advanced to a borrower by a lender or other financial institution, including but not limited to the following:

1. LOST, STOLEN, DESTROYED, OR MISAPPLIED: Funds held in a trust or other fiduciary capacity for the benefit of a beneficiary.
2. Loans and advances made or advanced in the full and complete discharge of a debt or obligation.
3. Loans and advances made or advanced in the full and complete discharge of a debt or obligation to a third party.
4. Loans and advances made or advanced in the full and complete discharge of a debt or obligation to a third party.
5. Loans and advances made or advanced in the full and complete discharge of a debt or obligation to a third party.
6. Loans and advances made or advanced in the full and complete discharge of a debt or obligation to a third party.
7. Loans and advances made or advanced in the full and complete discharge of a debt or obligation to a third party.
8. Loans and advances made or advanced in the full and complete discharge of a debt or obligation to a third party.
9. Loans and advances made or advanced in the full and complete discharge of a debt or obligation to a third party.
10. Loans and advances made or advanced in the full and complete discharge of a debt or obligation to a third party.

SECTION 16.02
 Issued by Dodge County State & Justice Co., LLC
 SPECIAL INTERESTOR

The policy will not cover a person's loss or damage resulting from the loss and non-payment of any loans or amounts advanced to a borrower by a lender or other financial institution, including but not limited to the following:

1. LOST, STOLEN, DESTROYED, OR MISAPPLIED: Funds held in a trust or other fiduciary capacity for the benefit of a beneficiary.
2. Loans and advances made or advanced in the full and complete discharge of a debt or obligation.
3. Loans and advances made or advanced in the full and complete discharge of a debt or obligation to a third party.
4. Loans and advances made or advanced in the full and complete discharge of a debt or obligation to a third party.
5. Loans and advances made or advanced in the full and complete discharge of a debt or obligation to a third party.
6. Loans and advances made or advanced in the full and complete discharge of a debt or obligation to a third party.
7. Loans and advances made or advanced in the full and complete discharge of a debt or obligation to a third party.
8. Loans and advances made or advanced in the full and complete discharge of a debt or obligation to a third party.
9. Loans and advances made or advanced in the full and complete discharge of a debt or obligation to a third party.
10. Loans and advances made or advanced in the full and complete discharge of a debt or obligation to a third party.

SECTION 16.03
 Issued by Dodge County State & Justice Co., LLC
 SPECIAL INTERESTOR

The policy will not cover a person's loss or damage resulting from the loss and non-payment of any loans or amounts advanced to a borrower by a lender or other financial institution, including but not limited to the following:

1. LOST, STOLEN, DESTROYED, OR MISAPPLIED: Funds held in a trust or other fiduciary capacity for the benefit of a beneficiary.
2. Loans and advances made or advanced in the full and complete discharge of a debt or obligation.
3. Loans and advances made or advanced in the full and complete discharge of a debt or obligation to a third party.
4. Loans and advances made or advanced in the full and complete discharge of a debt or obligation to a third party.
5. Loans and advances made or advanced in the full and complete discharge of a debt or obligation to a third party.
6. Loans and advances made or advanced in the full and complete discharge of a debt or obligation to a third party.
7. Loans and advances made or advanced in the full and complete discharge of a debt or obligation to a third party.
8. Loans and advances made or advanced in the full and complete discharge of a debt or obligation to a third party.
9. Loans and advances made or advanced in the full and complete discharge of a debt or obligation to a third party.
10. Loans and advances made or advanced in the full and complete discharge of a debt or obligation to a third party.

SECTION 16.04
 Issued by Dodge County State & Justice Co., LLC
 SPECIAL INTERESTOR

The policy will not cover a person's loss or damage resulting from the loss and non-payment of any loans or amounts advanced to a borrower by a lender or other financial institution, including but not limited to the following:

1. LOST, STOLEN, DESTROYED, OR MISAPPLIED: Funds held in a trust or other fiduciary capacity for the benefit of a beneficiary.
2. Loans and advances made or advanced in the full and complete discharge of a debt or obligation.
3. Loans and advances made or advanced in the full and complete discharge of a debt or obligation to a third party.
4. Loans and advances made or advanced in the full and complete discharge of a debt or obligation to a third party.
5. Loans and advances made or advanced in the full and complete discharge of a debt or obligation to a third party.
6. Loans and advances made or advanced in the full and complete discharge of a debt or obligation to a third party.
7. Loans and advances made or advanced in the full and complete discharge of a debt or obligation to a third party.
8. Loans and advances made or advanced in the full and complete discharge of a debt or obligation to a third party.
9. Loans and advances made or advanced in the full and complete discharge of a debt or obligation to a third party.
10. Loans and advances made or advanced in the full and complete discharge of a debt or obligation to a third party.

This survey was prepared by the firm of ALTA / NPS Land Title Survey, Inc., a professional engineering firm, under the supervision of the Professional Engineer, License No. 15-550, State of Nebraska. The survey was made in accordance with the provisions of the Nebraska Surveying Act, Chapter 48, Nebraska Revised Statutes, and the rules and regulations of the Board of Professional Engineers, State of Nebraska. The survey was made on or about the date of the survey, and the accuracy of the survey is guaranteed by the Professional Engineer, License No. 15-550, State of Nebraska.



Lot 1 and 2, Fountain Springs Second Subdivision AND Lot 2, Fountain Springs Third Addition AND Lot 1 and 2, Fountain Springs Fourth Subdivision, ALL being Additions to the City of Fremont, Dodge County, Nebraska.

ADVANCED CONSULTING ENGINEERING SERVICES
 1134 N. Washington St., Ste. 210
 Lincoln, NE 68502
 Phone: (402) 441-1021