



COPY

400 East Military Avenue, Fremont, NE 68025-5141

August 8, 2019

RE: Conditional Use Permit

Agenda Item # 216.
Date 8-28-2019

Dear Property Owner:

You are hereby advised that the City of Fremont has received the following application(s):

A request by Marlin Brabec on behalf of Don Peterson and Associates Real Estate Co., for approval of a conditional use permit to allow agricultural crops planted and cultivated in residential zoning inside the City limits at Sunridge Place, located between Military Avenue, Jack Sutton Drive, Luther Road & Johnson Drive, and more particularly described as parcels of land being part of the NW1/4 of Section 19, Township 17 North, Range 9 East of the 6th P.M., Dodge County, Nebraska.

A public hearing on this application will be held before the City of Fremont Planning Commission on the 19th day of August, 2019. The public hearing is your opportunity to appear and speak on the merits of this application, if you so choose. The Planning Commission formal meeting begins at 5:00 PM in the Fremont City Council Chambers located on the second floor in the Fremont Municipal Building at 400 East Military Avenue, Fremont, Nebraska.

If you would like more information, you are encouraged to contact the applicant Marlin Brabec at 402-721-9700 or marlin@donpeterson.com, or the Planning Director, Jennifer Dam at 402-727-2636 or jennifer.dam@fremontne.gov.

The Planning Department staff report and recommendation will be available at the Planning Department office on Friday, August 16th after 3:00 PM. The Planning Commission Agenda and staff reports will also be available on the City's website at that time, www.fremontne.gov.

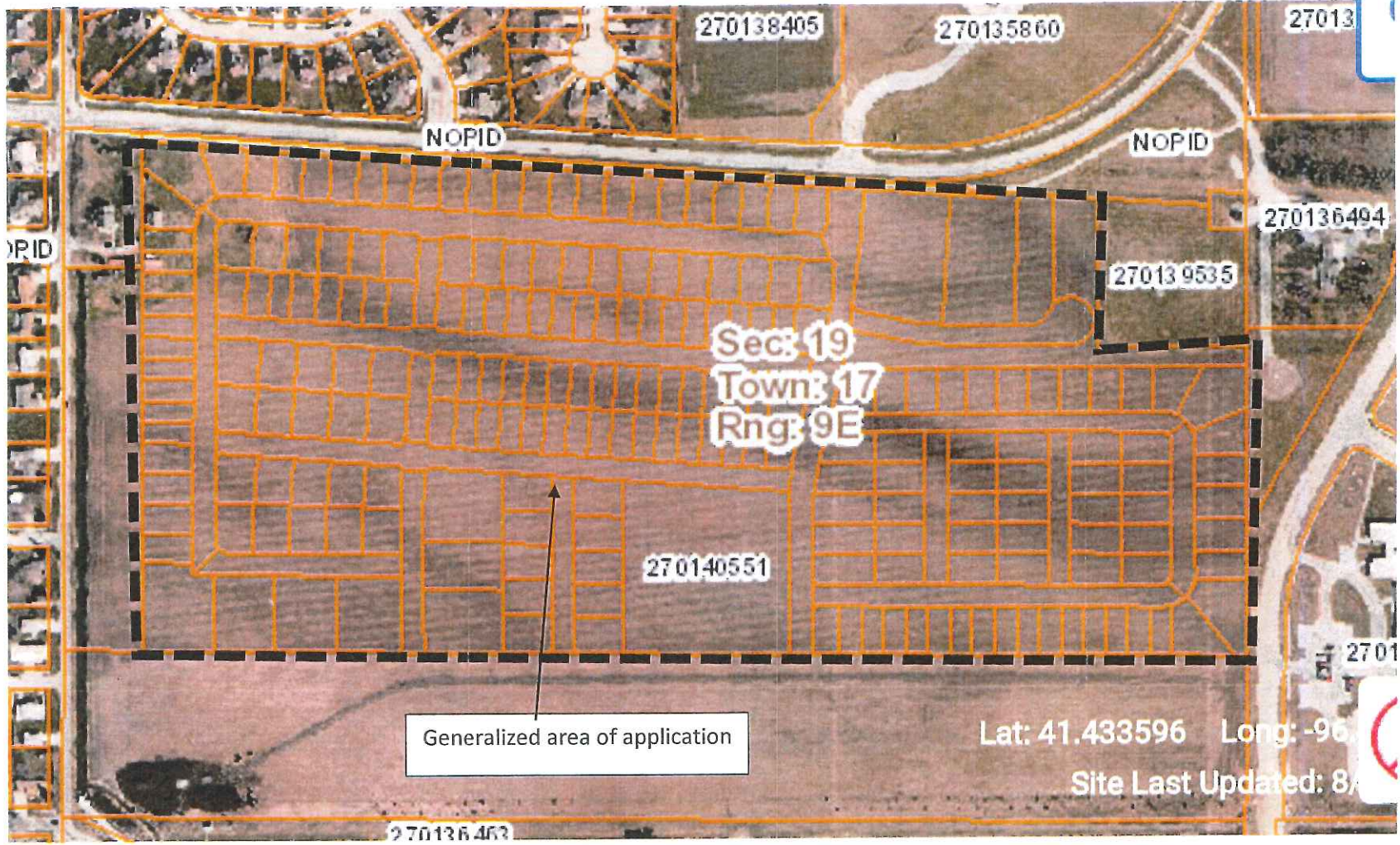
Sincerely,

Jennifer L. Dam, AICP
Planning Director

ATTACHMENT; map

Cc: Marlin Brabec, Don Peterson and Associates
Dodge County
Fremont School Board
County Board
Lower Platte North NRD

RECEIVED
AUG 12 AM 11:59
DODGE COUNTYWAY DAPB



270138405

270135860

27013

NOPID

NOPID

OPID

270136494

270139535

Sec: 19
Town: 17
Rng: 9E

270140551

2701

Generalized area of application

Lat: 41.433596 Long: -96

Site Last Updated: 8/

270136463