

COPY

WITNESS, that this shall be an agreement between Dodge County, hereafter referred to as the County and OMAHA PUBLIC POWER DISTRICT, hereafter referred to as the Applicant. Whereas, the County and Applicant do hereby agree,

1. THAT, the Applicant shall be permitted to install a overhead electric distribution line under, through, or aerial, the Public Right-of-Way of Dodge County.
2. THAT, the County and Townships are the owners and responsible for the Public Right-of-Way in the County and Applicant desires to install a Utility on Public Right-of Way.
3. THAT, in consideration of this agreement, the County does hereby permit Applicant to lay, install and construct said Utility in the Public Right-of-Way between E Military Ave to Co Rd U (Description of Property or Sections) in SW Corner Sect 15, T-17-N, R-9-E to SW Corner Sect 22, T-17-N, R-09-E Township, Dodge County, Nebraska.
4. THAT, the permit on the part of Dodge County is revocable at the will of the County, and Applicant agrees that upon written notice from the County Board of Supervisors, he will immediately and forthwith remove said Utility and any and all pipes or other material contained or used in connection with said Utility and return the roadway occupied by said Utility to substantially its original condition as before installation of said Utility.
5. THAT, the Applicant shall notify the Highway Superintendent and local Township for the purpose of removing the gravel windrow to the opposite side of road so as not to lose any gravel in the open trench.
6. THAT, all backfill in the Public Right-of-Way proper shall be made with material excavated from the crossing or with material equivalent thereto in texture. Material shall be placed in six inch lifts for the full depth of the trench and compacted by tamping to the original cross section. All utilities placed in areas susceptible to erosion shall place adequate protection against erosion. This protection may include bale checks, silt fence and erosion blankets. All vegetation destroyed shall be replaced. Disturbed areas will be reseeded with native grasses and a starter fertilizer. The minimum depth of earth cover over the utility line shall be 3 feet. Installation of underground utility lines under the traveled portion of an existing county road way must be encased in a plastic or steel conduit. The casing shall be bored from the toe of the shoulder slope to the toe of the opposite shoulder slope. The utility shall be placed at a minimum depth of 3 feet below the bottom elevation of the parallel road ditch. Applicant and his contractor or subcontractors are responsible for temporary traffic control on Dodge County Right-of-Way based on the standards and guidelines found in Part 6 of the 2009 Edition of the Manual on Uniform Traffic Control Devices (MUTCD) to insure a safe work zone for the workers and the public. Applicant will provide all necessary signs, barricades, cones, flaggers and message boards.
7. THAT, the Applicant shall obtain approval of all County road restoration from the County Highway Superintendent or Township Official prior to leaving the site(s).
8. THAT, all backfilled area(s) disturbed by excavation and backfill operations shall be graded, hand dressed as required to restore the terrain to its original shape, grade, and cross section, and regraded or reroocked at a rate of 150 tons per mile as directed by the County Highway Superintendent or Township Official.
9. THAT, the Applicant shall as directed by the County Highway Superintendent or Township Official remove at the Applicant's expense from the Public Right-of-Way all temporary structures, and waste materials resulting from their operations.
10. THAT, the Applicant shall file a scaled set of plans, showing the Utility route, depth, and distance from the section line with the Dodge County Highway Superintendent.
11. THAT, the Applicant shall when installing an aerial Utility, shall install such Utility one foot inside the Public Right-of-Way and at a minimum height of 18 feet above the traveled way.
12. THAT, the future maintenance of said Utility and reinstallation or reconstruction of same for any purpose whatsoever shall be borne by Applicant.
13. THAT, Applicant does hereby agree to hold the County or any of its Officers, Agents, or Employees forever harmless of all liabilities due to improper installation, construction, and maintenance of said Utility.
14. THAT, the Applicant shall submit an Insurance Certificate verifying General Liability of \$1,000,000.00; Personal Injury of \$500,000.00; Product & Completed Operations Aggregate of \$1,000,000.00; Medical Expense (Any One Person) of \$5,000.00; Each Occurrence of \$500,000.00. Certificate to be filed with this application.
15. THAT, this permit is valid for 6 months from the date of issuance or reapplication is required to renew.

IN WITNESS WHEREOF, the parties aforesaid have hereto set their hand this 12th day of November, 2021

DocuSigned by:  
Sharyl L McGuire  
Signature of Applicant

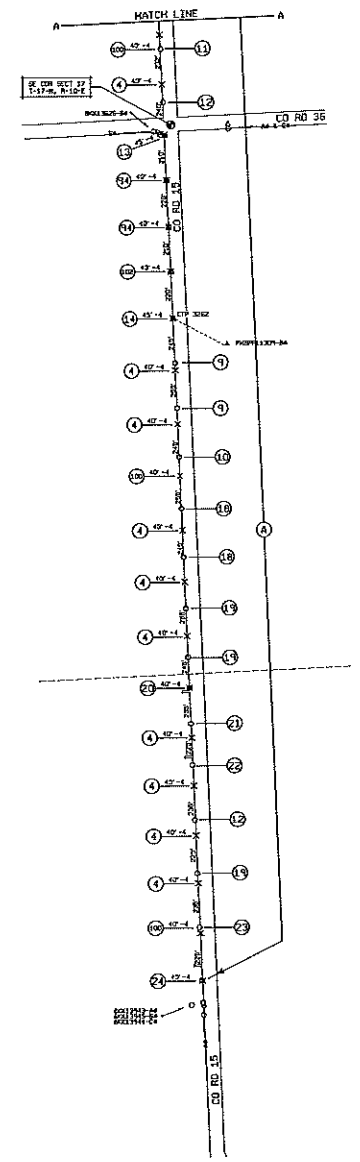
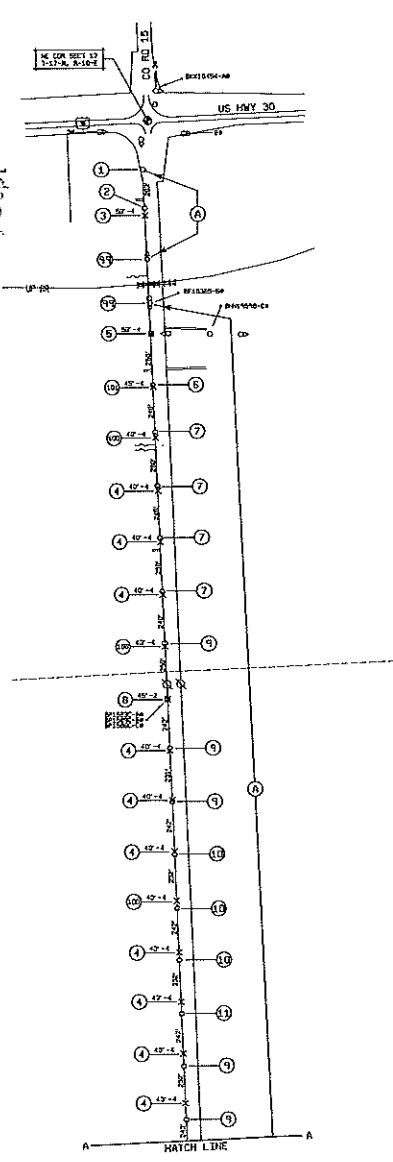
[Signature]  
Dodge County Highway Superintendent

OMAHA PUBLIC POWER DISTRICT  
ATTN: Alyssa Bryant, 6E/EP3  
444 S 16<sup>TH</sup> ST MALL  
OMAHA, NE 68102-2247  
Address of Applicant

Dec 1, 2021  
Date Filed with Dodge County Board of Supervisors

RECEIVED  
Dodge County Highway Dept  
2021 NOV 12 PM 1:46

2021 NOV 12 PM 1:46  
 RECEIVED  
 State Highway Dept



- 0020263901
1. 3" W.P. 2" STD 300 15', 3" W.P. 2" STD 300 15', STD 300 15'.
  2. 3" W.P. 2" STD 300 15', STD 300 15'.
  3. 3" W.P. 2" STD 300 15', STD 300 15'.
  4. 3" W.P. 2" STD 300 15', STD 300 15'.
  5. 3" W.P. 2" STD 300 15', STD 300 15'.
  6. 3" W.P. 2" STD 300 15', STD 300 15'.
  7. 3" W.P. 2" STD 300 15', STD 300 15'.
  8. 3" W.P. 2" STD 300 15', STD 300 15'.
  9. 3" W.P. 2" STD 300 15', STD 300 15'.
  10. 3" W.P. 2" STD 300 15', STD 300 15'.
  11. 3" W.P. 2" STD 300 15', STD 300 15'.
  12. 3" W.P. 2" STD 300 15', STD 300 15'.
  13. 3" W.P. 2" STD 300 15', STD 300 15'.
  14. 3" W.P. 2" STD 300 15', STD 300 15'.
  15. 3" W.P. 2" STD 300 15', STD 300 15'.
  16. 3" W.P. 2" STD 300 15', STD 300 15'.
  17. 3" W.P. 2" STD 300 15', STD 300 15'.
  18. 3" W.P. 2" STD 300 15', STD 300 15'.
  19. 3" W.P. 2" STD 300 15', STD 300 15'.
  20. 3" W.P. 2" STD 300 15', STD 300 15'.
  21. 3" W.P. 2" STD 300 15', STD 300 15'.
  22. 3" W.P. 2" STD 300 15', STD 300 15'.
  23. 3" W.P. 2" STD 300 15', STD 300 15'.
  24. 3" W.P. 2" STD 300 15', STD 300 15'.
- CONDUCTOR NOTES
1. 3" W.P. 2" STD 300 15', STD 300 15'.

INDUSTRY QUALIFIED  
 WASHINGTON CO. 2802  
 NEW PRACTICES 2002, 2000, 2004

REFERENCE: V-1: 7441021



GRAPHIC SCALE  
 1" = 100'

AP 00001-11-02		OUTDOORWORK
1	SCALE	1" = 100'
2	DATE	08-24-21
3	DESIGNER	BNH/STJ
4	PROJECT	RD 25-24-21
5	APPROVED	08-24-21
6	DATE	08-24-21
7	COPY	08-24-21
8	DESCRIPTION	
9	REVISIONS	

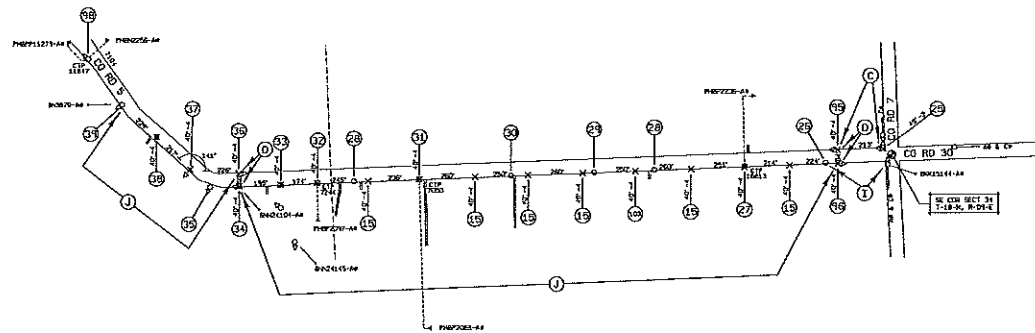
**RURAL CONDUCTOR REPLACEMENT**  
 ARLINGTON, NE

EXC 197

SKF-21-779

2021 NOV 12 PM 1:46

RECEIVED  
Road & Highway Dept

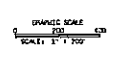


- 000728904
15. SET 07-4 PILE, 140', STD 20A.
  16. SET 07-4 PILE, 140', STD 20A.
  17. SET 07-4 PILE, 140', STD 20A.
  18. SET 07-4 PILE, 140', STD 20A.
  19. SET 07-4 PILE, 140', STD 20A.
  20. SET 07-4 PILE, 140', STD 20A.
  21. SET 07-4 PILE, 140', STD 20A.
  22. SET 07-4 PILE, 140', STD 20A.
  23. SET 07-4 PILE, 140', STD 20A.
  24. SET 07-4 PILE, 140', STD 20A.
  25. SET 07-4 PILE, 140', STD 20A.
  26. SET 07-4 PILE, 140', STD 20A.
  27. SET 07-4 PILE, 140', STD 20A.
  28. SET 07-4 PILE, 140', STD 20A.
  29. SET 07-4 PILE, 140', STD 20A.
  30. SET 07-4 PILE, 140', STD 20A.

- CONDUCTOR NOTES
- C. 200A 2-12-71A 120' IN RAY PHS & NEUT 1640 PG 299-301.
  - D. 200A 2-12-71A 120' IN RAY PHS & NEUT 1640 PG 299-301.
  - E. 200A 2-12-71A 120' IN RAY PHS & NEUT 1640 PG 299-301.
  - F. 200A 2-12-71A 120' IN RAY PHS & NEUT 1640 PG 299-301.

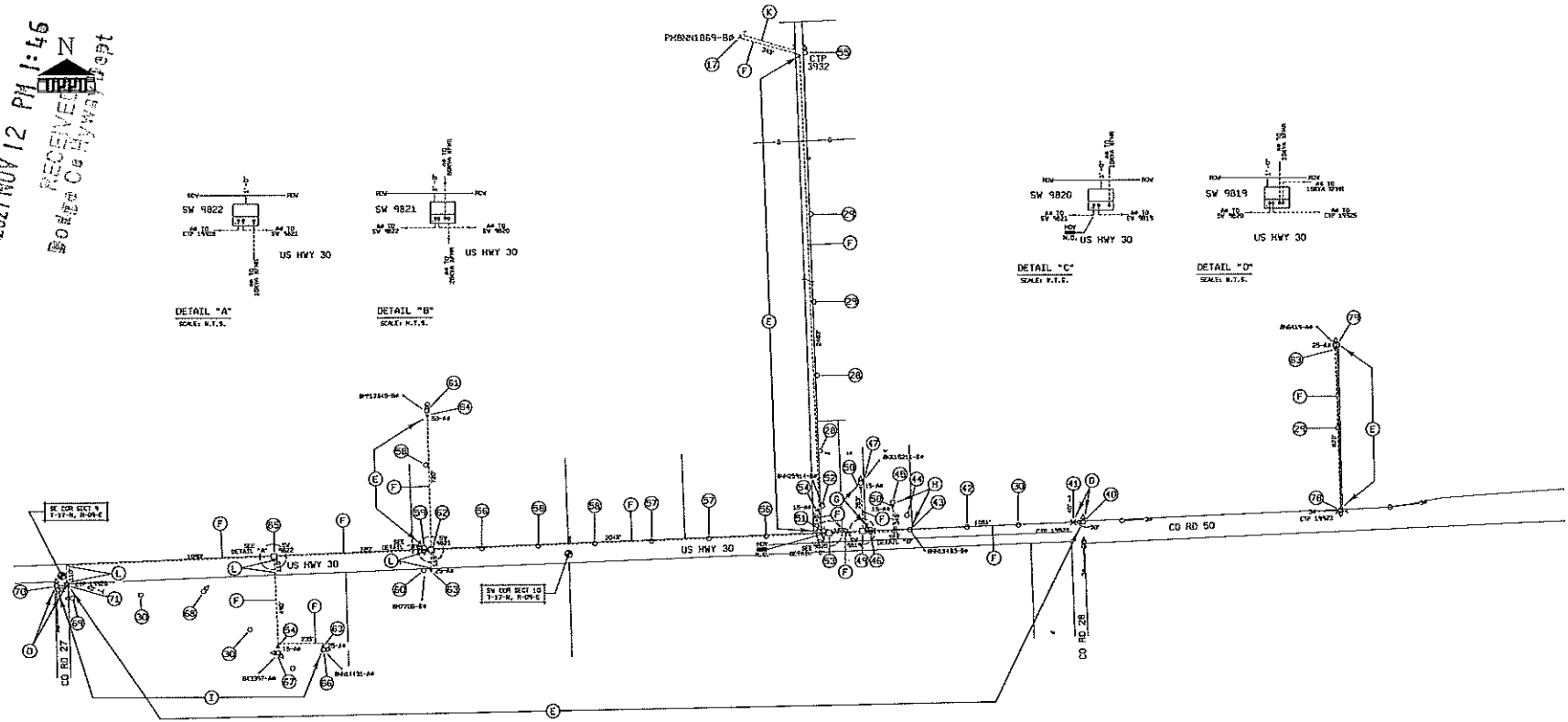
PERMITS REQUIRED  
WASHINGTON CO, 2500  
NEXT PERMITS: 2501, 2502, 2503, 2504

REFERENCE NO. 7541103



NO. 00000001-02	PROJECT	RURAL CONDUCTOR REPLACEMENT
1	SCALE	1" = 200'
2	DATE	09-24-21
3	DESIGNER	SKF
4	CHECKER	SKF
5	DATE	09-24-21
6	APP'D.	SKF
7	DATE	09-24-21
8	APP'D.	SKF
9	DATE	09-24-21
10	APP'D.	SKF
11	DATE	09-24-21
12	APP'D.	SKF
13	DATE	09-24-21
14	APP'D.	SKF
15	DATE	09-24-21
16	APP'D.	SKF
17	DATE	09-24-21
18	APP'D.	SKF
19	DATE	09-24-21
20	APP'D.	SKF
21	DATE	09-24-21
22	APP'D.	SKF
23	DATE	09-24-21
24	APP'D.	SKF
25	DATE	09-24-21
26	APP'D.	SKF
27	DATE	09-24-21
28	APP'D.	SKF
29	DATE	09-24-21
30	APP'D.	SKF
31	DATE	09-24-21
32	APP'D.	SKF
33	DATE	09-24-21
34	APP'D.	SKF
35	DATE	09-24-21
36	APP'D.	SKF
37	DATE	09-24-21
38	APP'D.	SKF
39	DATE	09-24-21
40	APP'D.	SKF
41	DATE	09-24-21
42	APP'D.	SKF
43	DATE	09-24-21
44	APP'D.	SKF
45	DATE	09-24-21
46	APP'D.	SKF
47	DATE	09-24-21
48	APP'D.	SKF
49	DATE	09-24-21
50	APP'D.	SKF

2021 NOV 12 PM 1:46  
 RECEIVED  
 Bureau of Highway Dept



- 0070293901
11. HWY 30-4 POLE, STD 200A, 120V, 1PH.
  12. HWY 30-4 POLE, STD 200A, 120V, 1PH.
  13. HWY 30-4 POLE, STD 200A, 120V, 1PH.
  14. HWY 30-4 POLE, STD 200A, 120V, 1PH.
  15. HWY 30-4 POLE, STD 200A, 120V, 1PH.
  16. HWY 30-4 POLE, STD 200A, 120V, 1PH.
  17. HWY 30-4 POLE, STD 200A, 120V, 1PH.
  18. HWY 30-4 POLE, STD 200A, 120V, 1PH.
  19. HWY 30-4 POLE, STD 200A, 120V, 1PH.
  20. HWY 30-4 POLE, STD 200A, 120V, 1PH.
  21. HWY 30-4 POLE, STD 200A, 120V, 1PH.
  22. HWY 30-4 POLE, STD 200A, 120V, 1PH.
  23. HWY 30-4 POLE, STD 200A, 120V, 1PH.
  24. HWY 30-4 POLE, STD 200A, 120V, 1PH.
  25. HWY 30-4 POLE, STD 200A, 120V, 1PH.
  26. HWY 30-4 POLE, STD 200A, 120V, 1PH.
  27. HWY 30-4 POLE, STD 200A, 120V, 1PH.

- CONDUCTOR NOTES
1. 2-1/2" ALUMINUM RAY POLE & NEUT (BLACK) SPAN.
  2. 1-1/2" ALUMINUM RAY POLE & NEUT.
  3. 1-1/2" ALUMINUM RAY POLE & NEUT.
  4. 1-1/2" ALUMINUM RAY POLE & NEUT.
  5. 1-1/2" ALUMINUM RAY POLE & NEUT.
  6. 1-1/2" ALUMINUM RAY POLE & NEUT.
  7. 1-1/2" ALUMINUM RAY POLE & NEUT.
  8. 1-1/2" ALUMINUM RAY POLE & NEUT.
  9. 1-1/2" ALUMINUM RAY POLE & NEUT.
  10. 1-1/2" ALUMINUM RAY POLE & NEUT.
  11. 1-1/2" ALUMINUM RAY POLE & NEUT.
  12. 1-1/2" ALUMINUM RAY POLE & NEUT.
  13. 1-1/2" ALUMINUM RAY POLE & NEUT.
  14. 1-1/2" ALUMINUM RAY POLE & NEUT.
  15. 1-1/2" ALUMINUM RAY POLE & NEUT.
  16. 1-1/2" ALUMINUM RAY POLE & NEUT.
  17. 1-1/2" ALUMINUM RAY POLE & NEUT.
  18. 1-1/2" ALUMINUM RAY POLE & NEUT.
  19. 1-1/2" ALUMINUM RAY POLE & NEUT.
  20. 1-1/2" ALUMINUM RAY POLE & NEUT.
  21. 1-1/2" ALUMINUM RAY POLE & NEUT.
  22. 1-1/2" ALUMINUM RAY POLE & NEUT.
  23. 1-1/2" ALUMINUM RAY POLE & NEUT.
  24. 1-1/2" ALUMINUM RAY POLE & NEUT.
  25. 1-1/2" ALUMINUM RAY POLE & NEUT.
  26. 1-1/2" ALUMINUM RAY POLE & NEUT.
  27. 1-1/2" ALUMINUM RAY POLE & NEUT.

DESIGNED BY  
 WASHINGTON DC 2000  
 1007 PENNSYLVANIA AVE., N.W., WASHINGTON, D.C.

REFERENCE NO. 71461115



GRAPHIC SCALE  
 1" = 200'  
 1" = 200'

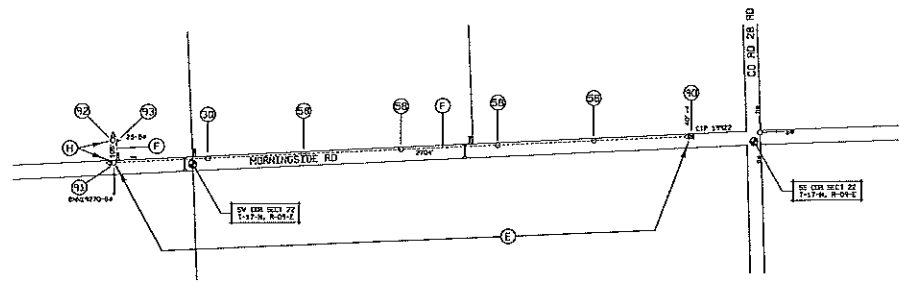
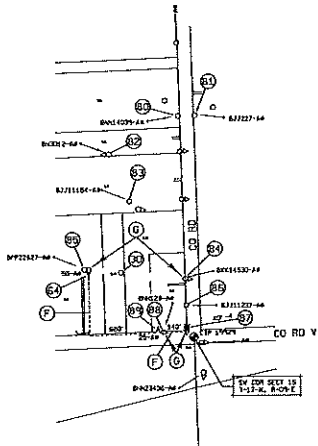
AN 0000014-02	000209001
SCALE	1" = 200'
DATE	08-08-21 JMS
DRAWN	JMS
CHECKED	JMS
APPROVED	JMS 08-21-21
APPROVED	JMS 08-21-21
DEPT. DISTRIBUTION	EXT 197
SKF-21-779	

**RURAL CONDUCTOR REPLACEMENT**  
 ARLINGTON, NE



2021 NOV 12 PM 1:46

RECEIVED  
Road & Highway Dept



**0070769501**

32. RMV 47-4 P.O.L. STD 285A.  
 34. RMV 47-4 P.O.L. STD 285A, RM.  
 35. INDR. RM 2750 STD 1708 (CONVA, A4), STD 218, STD 2478.  
 36. RMV STD 455 (CONVA) RMV / STD 455 (CONVA), 2.54 FM, RM.  
 37. INDR. RM 2750 STD 1708 (CONVA, A4), STD 218, STD 2478.  
 38. RMV STD 455 (CONVA) RMV / STD 455 (CONVA), 2.54 FM, RM.  
 39. INDR. RM 2750 STD 1708 (CONVA, A4), STD 218, STD 2478.  
 40. RMV STD 455 (CONVA) RMV / STD 455 (CONVA), 2.54 FM, RM.  
 41. INDR. RM 2750 STD 1708 (CONVA, A4), STD 218, STD 2478.  
 42. RMV STD 455 (CONVA) RMV / STD 455 (CONVA), 2.54 FM, RM.  
 43. INDR. RM 2750 STD 1708 (CONVA, A4), STD 218, STD 2478.  
 44. RMV STD 455 (CONVA) RMV / STD 455 (CONVA), 2.54 FM, RM.  
 45. INDR. RM 2750 STD 1708 (CONVA, A4), STD 218, STD 2478.  
 46. RMV STD 455 (CONVA) RMV / STD 455 (CONVA), 2.54 FM, RM.  
 47. INDR. RM 2750 STD 1708 (CONVA, A4), STD 218, STD 2478.  
 48. RMV STD 455 (CONVA) RMV / STD 455 (CONVA), 2.54 FM, RM.  
 49. INDR. RM 2750 STD 1708 (CONVA, A4), STD 218, STD 2478.  
 50. RMV STD 455 (CONVA) RMV / STD 455 (CONVA), 2.54 FM, RM.  
 51. INDR. RM 2750 STD 1708 (CONVA, A4), STD 218, STD 2478.  
 52. RMV STD 455 (CONVA) RMV / STD 455 (CONVA), 2.54 FM, RM.  
 53. INDR. RM 2750 STD 1708 (CONVA, A4), STD 218, STD 2478.  
 54. RMV STD 455 (CONVA) RMV / STD 455 (CONVA), 2.54 FM, RM.  
 55. INDR. RM 2750 STD 1708 (CONVA, A4), STD 218, STD 2478.  
 56. RMV STD 455 (CONVA) RMV / STD 455 (CONVA), 2.54 FM, RM.  
 57. INDR. RM 2750 STD 1708 (CONVA, A4), STD 218, STD 2478.  
 58. RMV STD 455 (CONVA) RMV / STD 455 (CONVA), 2.54 FM, RM.  
 59. INDR. RM 2750 STD 1708 (CONVA, A4), STD 218, STD 2478.  
 60. RMV STD 455 (CONVA) RMV / STD 455 (CONVA), 2.54 FM, RM.  
 61. INDR. RM 2750 STD 1708 (CONVA, A4), STD 218, STD 2478.  
 62. RMV STD 455 (CONVA) RMV / STD 455 (CONVA), 2.54 FM, RM.  
 63. INDR. RM 2750 STD 1708 (CONVA, A4), STD 218, STD 2478.  
 64. RMV STD 455 (CONVA) RMV / STD 455 (CONVA), 2.54 FM, RM.  
 65. INDR. RM 2750 STD 1708 (CONVA, A4), STD 218, STD 2478.  
 66. RMV STD 455 (CONVA) RMV / STD 455 (CONVA), 2.54 FM, RM.  
 67. INDR. RM 2750 STD 1708 (CONVA, A4), STD 218, STD 2478.  
 68. RMV STD 455 (CONVA) RMV / STD 455 (CONVA), 2.54 FM, RM.  
 69. INDR. RM 2750 STD 1708 (CONVA, A4), STD 218, STD 2478.  
 70. RMV STD 455 (CONVA) RMV / STD 455 (CONVA), 2.54 FM, RM.  
 71. INDR. RM 2750 STD 1708 (CONVA, A4), STD 218, STD 2478.  
 72. RMV STD 455 (CONVA) RMV / STD 455 (CONVA), 2.54 FM, RM.  
 73. INDR. RM 2750 STD 1708 (CONVA, A4), STD 218, STD 2478.  
 74. RMV STD 455 (CONVA) RMV / STD 455 (CONVA), 2.54 FM, RM.  
 75. INDR. RM 2750 STD 1708 (CONVA, A4), STD 218, STD 2478.  
 76. RMV STD 455 (CONVA) RMV / STD 455 (CONVA), 2.54 FM, RM.  
 77. INDR. RM 2750 STD 1708 (CONVA, A4), STD 218, STD 2478.  
 78. RMV STD 455 (CONVA) RMV / STD 455 (CONVA), 2.54 FM, RM.  
 79. INDR. RM 2750 STD 1708 (CONVA, A4), STD 218, STD 2478.  
 80. RMV STD 455 (CONVA) RMV / STD 455 (CONVA), 2.54 FM, RM.  
 81. INDR. RM 2750 STD 1708 (CONVA, A4), STD 218, STD 2478.  
 82. RMV STD 455 (CONVA) RMV / STD 455 (CONVA), 2.54 FM, RM.  
 83. INDR. RM 2750 STD 1708 (CONVA, A4), STD 218, STD 2478.  
 84. RMV STD 455 (CONVA) RMV / STD 455 (CONVA), 2.54 FM, RM.  
 85. INDR. RM 2750 STD 1708 (CONVA, A4), STD 218, STD 2478.  
 86. RMV STD 455 (CONVA) RMV / STD 455 (CONVA), 2.54 FM, RM.  
 87. INDR. RM 2750 STD 1708 (CONVA, A4), STD 218, STD 2478.  
 88. RMV STD 455 (CONVA) RMV / STD 455 (CONVA), 2.54 FM, RM.  
 89. INDR. RM 2750 STD 1708 (CONVA, A4), STD 218, STD 2478.  
 90. RMV STD 455 (CONVA) RMV / STD 455 (CONVA), 2.54 FM, RM.  
 91. INDR. RM 2750 STD 1708 (CONVA, A4), STD 218, STD 2478.  
 92. RMV STD 455 (CONVA) RMV / STD 455 (CONVA), 2.54 FM, RM.  
 93. INDR. RM 2750 STD 1708 (CONVA, A4), STD 218, STD 2478.  
 94. RMV STD 455 (CONVA) RMV / STD 455 (CONVA), 2.54 FM, RM.  
 95. INDR. RM 2750 STD 1708 (CONVA, A4), STD 218, STD 2478.  
 96. RMV STD 455 (CONVA) RMV / STD 455 (CONVA), 2.54 FM, RM.  
 97. INDR. RM 2750 STD 1708 (CONVA, A4), STD 218, STD 2478.  
 98. RMV STD 455 (CONVA) RMV / STD 455 (CONVA), 2.54 FM, RM.  
 99. INDR. RM 2750 STD 1708 (CONVA, A4), STD 218, STD 2478.  
 100. RMV STD 455 (CONVA) RMV / STD 455 (CONVA), 2.54 FM, RM.

**CONDUCTOR NOTES**

- 1. RMV 2-12 5/2 1/2 2/2 3 NEUT.
- 2. RMV 2-12 5/2 1/2 2/2 3 NEUT. CA 1000000000.
- 3. RMV 2-12 5/2 1/2 2/2 3 NEUT.
- 4. RMV 2-12 5/2 1/2 2/2 3 NEUT.

REQUISITS REQUIRED  
WASHINGTON ED 2500  
MONT PEN 4511; 2501, 2502, 2503, 2504

REFERENCE STA 7544404



NOV 12 2021	
BY	DATE
CHKD	DATE
DIST	DATE
APPROV	DATE
DISTRICT	
COUNTY	
LOCAL	
STATE	
NATION	

**RURAL CONDUCTOR REPLACEMENT**

ARLINGTON, NE

EX 1747

SKF-21-779