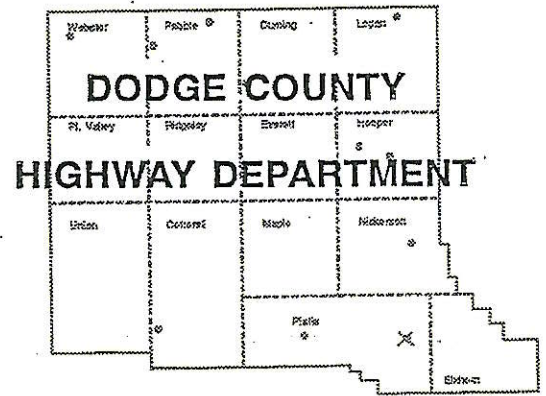



SCOTT HUPPERT  
Highway Superintendent

JEAN ANDREWS  
Asst. Highway Superintendent

Courthouse - 435 N. Park - Rm 204  
Fremont, Nebraska 68025-4977  
Phone (402) 727-2722



  
**COPY**

Agenda Item # 21C  
Date 5/29/24

To; Board Of Supervisers

After taken a look at this request of vacating a street 452.69 feet long by 66 feet wide in the town of Ames Nebraska and finding that this street has trees and brush growing up in it. And also there is trash being dumped here to. After talking with Mr Justin Taylor who farms beside this street ,he is wanting to clean the trees and brush up and try and discourage people from dumping trash here. My recommendation to the Board is to vacate this road.

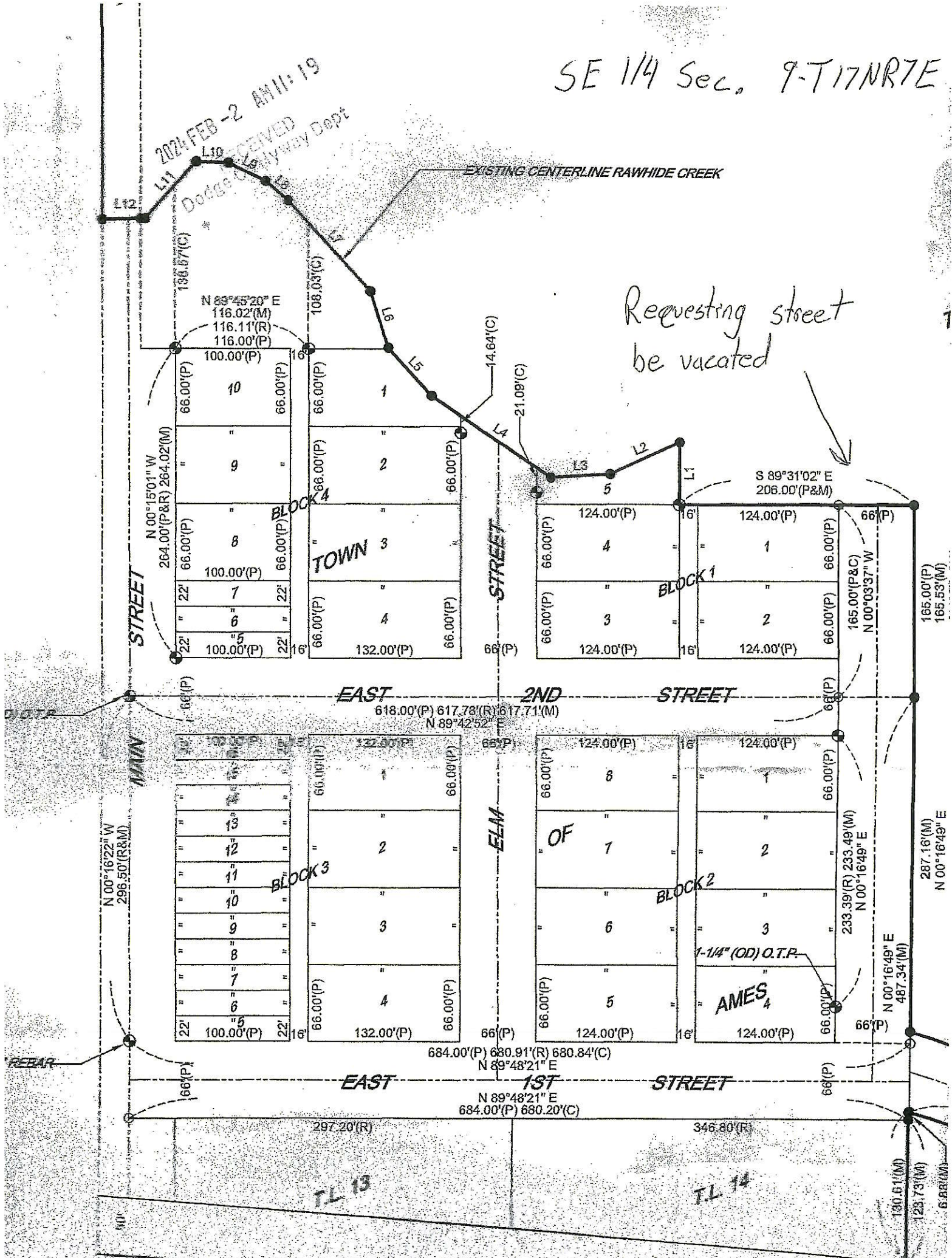
2024 MAY 24 AM 8:03  
RECEIVED  
Dodge Co Highway Dept

SE 1/4 Sec. 9-T17NR7E

2024 FEB -2 AM 11:19  
RECEIVED  
Dodge County Highway Dept

EXISTING CENTERLINE RAWHIDE CREEK

Requesting street  
be vacated



N 00°15'01" W 264.00'(P&R) 264.02'(M)  
 N 89°45'20" E 116.02'(M) 116.11'(R) 116.00'(P) 100.00'(P)  
 66.00'(P) 66.00'(P) 66.00'(P) 66.00'(P)  
 10 1 16  
 66.00'(P) 66.00'(P) 66.00'(P) 66.00'(P)  
 9 2  
 66.00'(P) 66.00'(P) 66.00'(P) 66.00'(P)  
 8 3  
 100.00'(P) 66.00'(P) 66.00'(P) 66.00'(P)  
 7 4  
 22' 22' 22' 22'  
 6 132.00'(P) 66.00'(P)  
 5 66(P)  
 100.00'(P) 22' 16'  
 66(P)  
 EAST 2ND STREET  
 618.00'(P) 617.78'(R) 617.71'(M)  
 N 89°42'52" E  
 66(P)  
 66.00'(P) 124.00'(P) 66.00'(P) 66.00'(P)  
 4 1 66(P)  
 66.00'(P) 124.00'(P) 66.00'(P) 66.00'(P)  
 3 2  
 66.00'(P) 124.00'(P) 66.00'(P) 66.00'(P)  
 124.00'(P) 16' 124.00'(P) 66(P)  
 165.00'(P&C) N 00°03'37" W 165.53'(M)  
 165.00'(P) 165.53'(M)  
 MAIN STREET  
 N 00°16'22" W 296.50'(R&M)  
 296.50'(R&M)  
 13 12 11 10 9 8 7 6 5  
 100.00'(P) 22' 16'  
 66.00'(P) 66.00'(P) 66.00'(P) 66.00'(P)  
 132.00'(P) 66.00'(P)  
 66(P)  
 EAST 1ST STREET  
 684.00'(P) 680.91'(R) 680.84'(C)  
 N 89°48'21" E  
 684.00'(P) 680.20'(C)  
 297.20'(R) 346.80'(R)  
 TL 13 TL 14  
 130.61'(M) 123.73'(M) 6.88'(M)  
 N 00°16'49" E 487.34'(M)  
 287.16'(M) N 00°16'49" E  
 233.39'(R) 233.49'(M) N 00°16'49" E  
 1-1/4" (OD) O.T.P.  
 AMES 4  
 66.00'(P) 124.00'(P) 66.00'(P) 66.00'(P)  
 8 1 66.00'(P) 124.00'(P) 66.00'(P) 66.00'(P)  
 7 2  
 6 3  
 5 4  
 66.00'(P) 124.00'(P) 66.00'(P) 66.00'(P)



